

Datasheet for ABIN7479194

PSMB1 Protein (AA 29-241, full length) (GST tag)



[Go to Product page](#)

1 Image

Overview

Quantity:	100 µg
Target:	PSMB1
Protein Characteristics:	AA 29-241, full length
Origin:	Human
Source:	Escherichia coli (E. coli)
Protein Type:	Recombinant
Purification tag / Conjugate:	This PSMB1 protein is labelled with GST tag.
Application:	ELISA

Product Details

Sequence:	RFSPYVFNGG TILAIAGEDF AIVASDTRL S EGFSIHTRDS PKCYKLTDKT VIGCSGFHGD CLTLTKIIEA RLKMYKHSNN KAMTTGAIAA MLSTILYSRR FFPYYVYNII GGLDEEGKGA VYSFDPVGSY QRDSFKAGGS ASAMLQPLLD NQVGFKNMQN VEHVPLSLDR AMRLVKDVFI SAAERDVYTG DALRICIVTK EGIREETVSL RKD
Characteristics:	Please inquire if you are interested in this recombinant protein expressed in E. coli, mammalian cells or by baculovirus infection. Be aware about differences in price and lead time.
Purity:	95 %

Target Details

Target:	PSMB1
Alternative Name:	Proteasome subunit beta type-1 protein (PSMB1 Products)

Target Details

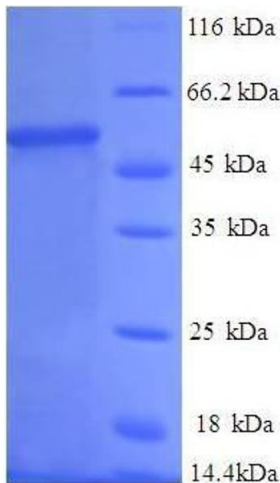
Background:	The proteasome is a multicatalytic proteinase complex which is characterized by its ability to cleave peptides with Arg, Phe, Tyr, Leu, and Glu adjacent to the leaving group at neutral or slightly basic pH. The proteasome has an ATP-dependent proteolytic activity.
Molecular Weight:	50.9 kD
UniProt:	P20618
Pathways:	Mitotic G1-G1/S Phases , DNA Replication , Synthesis of DNA

Application Details

Comment:	The yeast protein expression system is the most economical and efficient eukaryotic system for secretion and intracellular expression. A protein expressed by the mammalian cell system is of very high-quality and close to the natural protein. But the low expression level, the high cost of medium and the culture conditions restrict the promotion of mammalian cell expression systems. The yeast protein expression system serve as a eukaryotic system integrate the advantages of the mammalian cell expression system. A protein expressed by yeast system could be modiflicated such as glycosylation, acylation, phosphorylation and so on to ensure the native protein conformation. It can be used to produce protein material with high added value that is very close to the natural protein. Our proteins produced by yeast expression system has been used as raw materials for downstream preparation of monoclonal antibodies.
Restrictions:	For Research Use only

Handling

Format:	Lyophilized
Concentration:	0.2-2 mg/mL
Buffer:	Tris-based buffer, 50 % glycerol
Handling Advice:	Repeated freezing and thawing is not recommended. Store working aliquots at 4 °C for up to one week
Storage:	-20 °C
Storage Comment:	Store at -20 °C for extended storage, conserve at -20 °C or -80 °C



SDS-PAGE

Image 1. Proteasome (Prosome, Macropain) Subunit, beta Type, 1 (PSMB1) (AA 29-241), (full length) protein (GST tag)