

Datasheet for ABIN7479211

**RPS12 Protein (AA 1-132, full length) (GST tag)**[Go to Product page](#)**1** Image

## Overview

Quantity:	100 µg
Target:	RPS12
Protein Characteristics:	AA 1-132, full length
Origin:	Human
Source:	Escherichia coli (E. coli)
Protein Type:	Recombinant
Purification tag / Conjugate:	This RPS12 protein is labelled with GST tag.
Application:	ELISA

## Product Details

Sequence:	MAEEGIAAGG VMDVNTALQE VLKTALIHG LARGIREAAK ALDKRQAHLC VLASNCDEPM YVKLVEALCA EHQINLIKVD DNKKLGEWVG LCKIDREGKP RKVVGCSVCV VKDYGKESQA KDVIEEYFKC KK
Characteristics:	Please inquire if you are interested in this recombinant protein expressed in E. coli, mammalian cells or by baculovirus infection. Be aware about differences in price and lead time.
Purity:	95 %

## Target Details

Target:	RPS12
Alternative Name:	40S ribosomal protein S12 protein ( <a href="#">RPS12 Products</a> )
Background:	Belongs to the ribosomal protein S12e family.

## Target Details

Molecular Weight: 41.9 kD

UniProt: [P25398](#)

## Application Details

**Comment:** The yeast protein expression system is the most economical and efficient eukaryotic system for secretion and intracellular expression. A protein expressed by the mammalian cell system is of very high-quality and close to the natural protein. But the low expression level, the high cost of medium and the culture conditions restrict the promotion of mammalian cell expression systems. The yeast protein expression system serve as a eukaryotic system integrate the advantages of the mammalian cell expression system. A protein expressed by yeast system could be modified such as glycosylation, acylation, phosphorylation and so on to ensure the native protein conformation. It can be used to produce protein material with high added value that is very close to the natural protein. Our proteins produced by yeast expression system has been used as raw materials for downstream preparation of monoclonal antibodies.

**Restrictions:** For Research Use only

## Handling

**Format:** Lyophilized

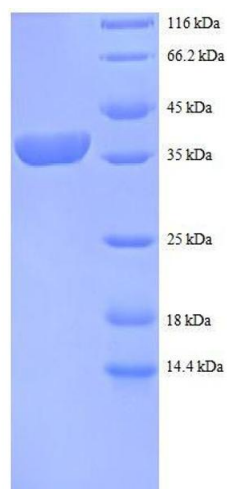
**Concentration:** 0.2-2 mg/mL

**Buffer:** Tris-based buffer, 50 % glycerol

**Handling Advice:** Repeated freezing and thawing is not recommended. Store working aliquots at 4 °C for up to one week

**Storage:** -20 °C

**Storage Comment:** Store at -20 °C for extended storage, conserve at -20 °C or -80 °C



SDS-PAGE

**Image 1.** Ribosomal Protein S12 (RPS12) (AA 1-132), (full length) protein (GST tag)