

Datasheet for ABIN7479223

**RPL36AL Protein (AA 1-106, full length) (GST tag)**[Go to Product page](#)**1** Image

## Overview

Quantity:	100 µg
Target:	RPL36AL
Protein Characteristics:	AA 1-106, full length
Origin:	Human
Source:	Escherichia coli (E. coli)
Protein Type:	Recombinant
Purification tag / Conjugate:	This RPL36AL protein is labelled with GST tag.
Application:	ELISA

## Product Details

Sequence:	VNVPKTRRTF CKKCGKHQPH KVTQYKKGKD SLYAQGKRRY DRKQSGYGGQ TKPIFRKKAK TTKKIVLRLE CVEPNCRSKR MLAIKRCKHF ELGGDKKRKG QVIQF
Characteristics:	Please inquire if you are interested in this recombinant protein expressed in E. coli, mammalian cells or by baculovirus infection. Be aware about differences in price and lead time.
Purity:	95 %

## Target Details

Target:	RPL36AL
Alternative Name:	60S ribosomal protein L36a-like protein ( <a href="#">RPL36AL Products</a> )
Background:	Belongs to the ribosomal protein L44e family.

## Target Details

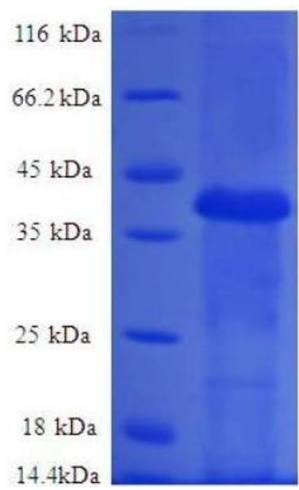
Molecular Weight:	39.7 kD
UniProt:	<a href="#">Q969Q0</a>

## Application Details

Comment:	The yeast protein expression system is the most economical and efficient eukaryotic system for secretion and intracellular expression. A protein expressed by the mammalian cell system is of very high-quality and close to the natural protein. But the low expression level, the high cost of medium and the culture conditions restrict the promotion of mammalian cell expression systems. The yeast protein expression system serve as a eukaryotic system integrate the advantages of the mammalian cell expression system. A protein expressed by yeast system could be modified such as glycosylation, acylation, phosphorylation and so on to ensure the native protein conformation. It can be used to produce protein material with high added value that is very close to the natural protein. Our proteins produced by yeast expression system has been used as raw materials for downstream preparation of monoclonal antibodies.
Restrictions:	For Research Use only

## Handling

Format:	Lyophilized
Concentration:	0.2-2 mg/mL
Buffer:	Tris-based buffer, 50 % glycerol
Handling Advice:	Repeated freezing and thawing is not recommended. Store working aliquots at 4 °C for up to one week
Storage:	-20 °C
Storage Comment:	Store at -20 °C for extended storage, conserve at -20 °C or -80 °C



SDS-PAGE

**Image 1.** Ribosomal Protein L36a-Like (RPL36AL) (AA 1-106), (full length) protein (GST tag)