

Datasheet for ABIN7479227

**RPS16 Protein (AA 2-142, partial) (GST tag)**[Go to Product page](#)**1** Image

## Overview

|                               |  |
|-------------------------------|--|
| Quantity:                     | 100 µg                                       |
| Target:                       | RPS16  |
| Protein Characteristics:      | AA 2-142, partial                            |
| Origin:                       | Human  |
| Source:                       | Escherichia coli (E. coli)                   |
| Protein Type:                 | Recombinant                                  |
| Purification tag / Conjugate: | This RPS16 protein is labelled with GST tag. |
| Application:                  | ELISA  |

## Product Details

|                  |  |
|------------------|--|
| Sequence:        | PSKGPLQSVQ VFGRKKTATA VAHCKRGNGL IKVNGRPLEM IEPRTLQYKL LEPVLLLGKE<br>RFAGVDIRVR VKGGGHVAQI YAIRQSISKA LVAYYQKYVD EASKKEIKDI LIQYDRTLTV<br>ADPRRCESKK FGGPGARARY Q                      |
| Characteristics: | Please inquire if you are interested in this recombinant protein expressed in E. coli, mammalian cells or by baculovirus infection. Be aware about differences in price and lead time. |
| Purity:          | 95 %   |

## Target Details

|                   |  |
|-------------------|--|
| Target:           | RPS16  |
| Alternative Name: | 40S ribosomal protein S16 protein ( <a href="#">RPS16 Products</a> ) |
| Background:       | Belongs to the ribosomal protein S9P family.                         |

## Target Details

Molecular Weight: 43.2 kD

UniProt: [P62249](#)

## Application Details

**Comment:** The yeast protein expression system is the most economical and efficient eukaryotic system for secretion and intracellular expression. A protein expressed by the mammalian cell system is of very high-quality and close to the natural protein. But the low expression level, the high cost of medium and the culture conditions restrict the promotion of mammalian cell expression systems. The yeast protein expression system serve as a eukaryotic system integrate the advantages of the mammalian cell expression system. A protein expressed by yeast system could be modified such as glycosylation, acylation, phosphorylation and so on to ensure the native protein conformation. It can be used to produce protein material with high added value that is very close to the natural protein. Our proteins produced by yeast expression system has been used as raw materials for downstream preparation of monoclonal antibodies.

**Restrictions:** For Research Use only

## Handling

**Format:** Lyophilized

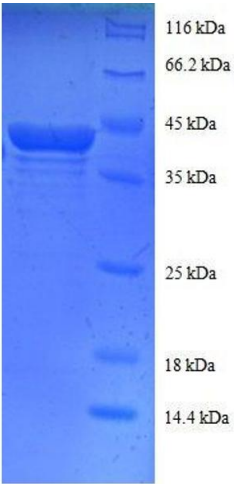
**Concentration:** 0.2-2 mg/mL

**Buffer:** Tris-based buffer, 50 % glycerol

**Handling Advice:** Repeated freezing and thawing is not recommended. Store working aliquots at 4 °C for up to one week

**Storage:** -20 °C

**Storage Comment:** Store at -20 °C for extended storage, conserve at -20 °C or -80 °C



**SDS-PAGE**

**Image 1.** Ribosomal Protein S16 (RPS16) (AA 2-142), (partial) protein (GST tag)