

Datasheet for ABIN7479229

**CSNK2B Protein (AA 2-215, partial) (GST tag)**[Go to Product page](#)**1** Image

## Overview

Quantity:	100 µg
Target:	CSNK2B
Protein Characteristics:	AA 2-215, partial
Origin:	Human
Source:	Escherichia coli (E. coli)
Protein Type:	Recombinant
Purification tag / Conjugate:	This CSNK2B protein is labelled with GST tag.
Application:	ELISA

## Product Details

Sequence:	SSSEEVSWIS WFCGLRGNEF FCEVDEDYIQ DKFNLTGLNE QVPHYRQALD MILDLEPDEE LEDNPNQSDL IEQAAEMLYG LIHARYILTN RGIAQMLEKY QQGDFGYCPR VYCENQPMPLP IGLSDIPGEA MVKLYCPKCM DVYTPKSSRH HHTDGAYFGT GFPHMLFMVH PEYRPKRPAN QFVPRLYGFK IHPMAYQLQL QAASNFKSPV KTIR
Characteristics:	Please inquire if you are interested in this recombinant protein expressed in E. coli, mammalian cells or by baculovirus infection. Be aware about differences in price and lead time.
Purity:	95 %

## Target Details

Target:	CSNK2B
Alternative Name:	Casein kinase II subunit beta protein ( <a href="#">CSNK2B Products</a> )

## Target Details

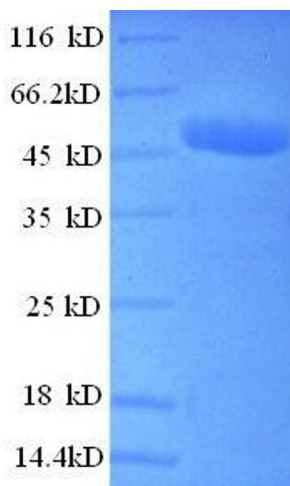
Background:	Participates in Wnt signaling By similarity. Plays a complex role in regulating the basal catalytic activity of the alpha subunit.
Molecular Weight:	52.2 kD
UniProt:	<a href="#">P67870</a>
Pathways:	<a href="#">SARS-CoV-2 Protein Interactome</a>

## Application Details

Comment:	The yeast protein expression system is the most economical and efficient eukaryotic system for secretion and intracellular expression. A protein expressed by the mammalian cell system is of very high-quality and close to the natural protein. But the low expression level, the high cost of medium and the culture conditions restrict the promotion of mammalian cell expression systems. The yeast protein expression system serve as a eukaryotic system integrate the advantages of the mammalian cell expression system. A protein expressed by yeast system could be modiflicated such as glycosylation, acylation, phosphorylation and so on to ensure the native protein conformation. It can be used to produce protein material with high added value that is very close to the natural protein. Our proteins produced by yeast expression system has been used as raw materials for downstream preparation of monoclonal antibodies.
Restrictions:	For Research Use only

## Handling

Format:	Lyophilized
Concentration:	0.2-2 mg/mL
Buffer:	Tris-based buffer, 50 % glycerol
Handling Advice:	Repeated freezing and thawing is not recommended. Store working aliquots at 4 °C for up to one week
Storage:	-20 °C
Storage Comment:	Store at -20 °C for extended storage, conserve at -20 °C or -80 °C



#### SDS-PAGE

**Image 1.** Casein Kinase 2, beta (CSNK2B) (AA 2-215), (partial) protein (GST tag)