

Datasheet for ABIN7479233

**PPP2CB Protein (AA 1-309, full length) (GST tag)**[Go to Product page](#)**1** Image

## Overview

Quantity:	100 µg
Target:	PPP2CB
Protein Characteristics:	AA 1-309, full length
Origin:	Human
Source:	Escherichia coli (E. coli)
Protein Type:	Recombinant
Purification tag / Conjugate:	This PPP2CB protein is labelled with GST tag.
Application:	ELISA

## Product Details

Sequence:	MDDKAFTKEL DQWVEQLNEC KQLNENQVRT LCEKAKEILT KESNVQEVRC PVTVCGDVHG QFHDLMELEFR IGGKSPDTNY LFMGDYVDRG YYSVETVTLL VALKVRYPER ITILRGNHES RQITQVYGFY DECLRKYGNA NWWKYFTDLF DYLPALTALVD GQIFCLHGGL SPSIDTLDHI RALDRLQVEP HEGPMCDLLW SDPDRGGWG ISPRGAGYTF GQDISETFNH ANGLTLVSRA HQLVMEGYNW CHDRNVVTIF SAPNYCYRCG NQAAIMELDD TLKYSFLQFD PAPRRGEPHV TRRTPDYFL
Characteristics:	Please inquire if you are interested in this recombinant protein expressed in E. coli, mammalian cells or by baculovirus infection. Be aware about differences in price and lead time.
Purity:	95 %

## Target Details

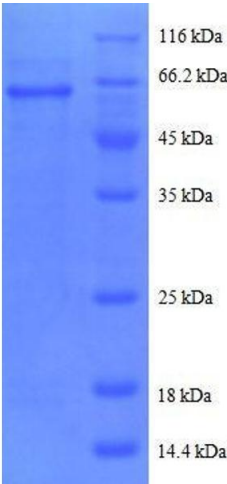
Target:	PPP2CB
Alternative Name:	Serine/threonine-protein phosphatase 2A catalytic subunit beta isoform protein ( <a href="#">PPP2CB Products</a> )
Background:	PP2A can modulate the activity of phosphorylase B kinase casein kinase 2, mitogen-stimulated S6 kinase, and MAP-2 kinase.
Molecular Weight:	63 kD
UniProt:	<a href="#">P62714</a>
Pathways:	<a href="#">Mitotic G1-G1/S Phases</a> , <a href="#">Hepatitis C</a> , <a href="#">Toll-Like Receptors Cascades</a>

## Application Details

Comment:	The yeast protein expression system is the most economical and efficient eukaryotic system for secretion and intracellular expression. A protein expressed by the mammalian cell system is of very high-quality and close to the natural protein. But the low expression level, the high cost of medium and the culture conditions restrict the promotion of mammalian cell expression systems. The yeast protein expression system serve as a eukaryotic system integrate the advantages of the mammalian cell expression system. A protein expressed by yeast system could be modiflicated such as glycosylation, acylation, phosphorylation and so on to ensure the native protein conformation. It can be used to produce protein material with high added value that is very close to the natural protein. Our proteins produced by yeast expression system has been used as raw materials for downstream preparation of monoclonal antibodies.
Restrictions:	For Research Use only

## Handling

Format:	Lyophilized
Concentration:	0.2-2 mg/mL
Buffer:	Tris-based buffer, 50 % glycerol
Handling Advice:	Repeated freezing and thawing is not recommended. Store working aliquots at 4 °C for up to one week
Storage:	-20 °C
Storage Comment:	Store at -20 °C for extended storage, conserve at -20 °C or -80 °C



SDS-PAGE

**Image 1.** Protein Phosphatase 2, Catalytic Subunit, beta Isozyme (PPP2CA) (AA 1-309), (full length) protein (GST tag)