

Datasheet for ABIN7479449

**IFNE Protein (AA 24-195, full length) (His tag)**[Go to Product page](#)**1** Image

## Overview

Quantity:	100 µg
Target:	IFNE
Protein Characteristics:	AA 24-195, full length
Origin:	Cow
Source:	Yeast
Protein Type:	Recombinant
Purification tag / Conjugate:	This IFNE protein is labelled with His tag.
Application:	ELISA

## Product Details

Sequence:	CYLS EDHMLG ARENLRLLAR MNRLSPHPCL QDRKDFGLPQ EMVEGNQLQK DQAISVLHEM LQQCFNLFYT EHSSAAWNTT LLEQLCTGLQ QQLEDLDA CL GPVMGEKDSD MGRMGPI LTV KKYFQGIHVY LKEKEYSDCA WEIIRVEMMR ALSSSTTLQK RLRKMGGDLN SL
Specificity:	Bos taurus (Bovine)
Characteristics:	Please inquire if you are interested in this recombinant protein expressed in E. coli, mammalian cells or by baculovirus infection. Be aware about differences in price and lead time.
Purity:	> 90 %

## Target Details

Target:	IFNE
Alternative Name:	Interferon tau-1 (IFNT1) ( <a href="#">IFNE Products</a> )

## Target Details

Background:	Recommended name: Interferon tau-1. Short name= IFN-tau-1. Alternative name(s): Antiluteolysin Trophoblast antiluteolytic protein Trophoblast protein 1. Short name= TP-1 Trophoblastin
-------------	--

Molecular Weight:	21.7 kD
-------------------	---------

Pathways:	<a href="#">Hormone Activity</a>
-----------	----------------------------------

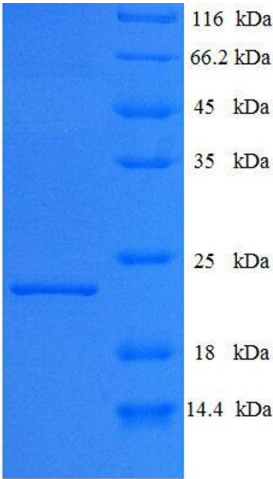
## Application Details

Comment:	The yeast protein expression system is the most economical and efficient eukaryotic system for secretion and intracellular expression. A protein expressed by the mammalian cell system is of very high-quality and close to the natural protein. But the low expression level, the high cost of medium and the culture conditions restrict the promotion of mammalian cell expression systems. The yeast protein expression system serve as a eukaryotic system integrate the advantages of the mammalian cell expression system. A protein expressed by yeast system could be modiflicated such as glycosylation, acylation, phosphorylation and so on to ensure the native protein conformation. It can be used to produce protein material with high added value that is very close to the natural protein. Our proteins produced by yeast expression system has been used as raw materials for downstream preparation of monoclonal antibodies.
----------	--

Restrictions:	For Research Use only
---------------	-----------------------

## Handling

Format:	Lyophilized
Concentration:	0.2-2 mg/mL
Buffer:	Tris-based buffer, 50 % glycerol
Handling Advice:	Repeated freezing and thawing is not recommended. Store working aliquots at 4 °C for up to one week
Storage:	-20 °C
Storage Comment:	Store at -20 °C, for extended storage, conserve at -20 °C or -80 °C.



SDS-PAGE

**Image 1.** Interferon epsilon (IFNE) (AA 24-195), (full length) protein (His tag) expressed in E. coli