

Datasheet for ABIN7479571

Beta Lactoglobulin (LGB) (full length) Protein**1** Image[Go to Product page](#)

Overview

Quantity:	1 mg
Target:	Beta Lactoglobulin (LGB)
Protein Characteristics:	full length
Origin:	Cow
Host:	Please inquire
Protein Type:	Native
Application:	Western Blotting (WB), ELISA

Product Details

Characteristics:	Full length native Bovine milk beta-Lactoglobulin
Purification:	Purified from Bovine milk
Purity:	> 95 %(SDS-PAGE)

Target Details

Target:	Beta Lactoglobulin (LGB)
Alternative Name:	beta-Lactoglobulin (LGB Products)
Background:	Background: beta-Lactoglobulin is the major whey protein of cow and sheep's milk (~3 g/l), and is also present in many other mammalian species, a notable exception being humans. Bovine beta-lactoglobulin is a relatively small protein of 162 residues, with an 18.4 kDa molecular weight. In physiological conditions it is predominantly dimeric, but dissociates to a monomer below about pH 3. Nevertheless, its native state remains fairly intact at lower pH values, as

Target Details

determined using NMR. Synonyms: Beta-LG.

Application Details

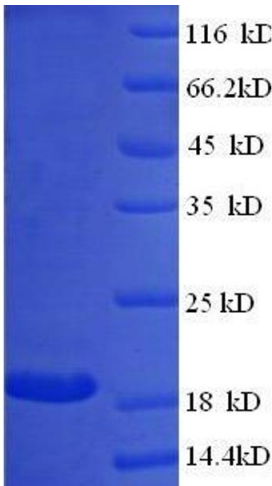
Restrictions: For Research Use only

Handling

Format: Lyophilized

Buffer: PBS

Images



SDS-PAGE

Image 1.