



[Go to Product page](#)

Datasheet for ABIN7479578

ALDOA Protein (AA 2-364, full length) (GST tag)

1 Image

Overview

Quantity:	100 µg
Target:	ALDOA
Protein Characteristics:	AA 2-364, full length
Origin:	Human
Source:	Escherichia coli (E. coli)
Protein Type:	Recombinant
Purification tag / Conjugate:	This ALDOA protein is labelled with GST tag.
Application:	SDS-PAGE (SDS), Western Blotting (WB), ELISA

Product Details

Sequence: PYQYPALTPE QKKELSDIAH RIVAPGKGIL AADESTGSIA KRLQSIGTEN TEENRRFYRQ
 LLLTADDRVN PCIGGVILFH ETLYQKADDG RFPFQVIKSK GGVVGKVDK GVVPLAGTNG
 ETTTQGLDGL SERCAQYKGD GADFAKWRCV LKIGEHTPSA LAIMENANVL ARYASICQQN
 GIVPIVEPEI LPDGDHDLKR CQYVTEKVLAVYKALSDHH IYLEGTLLKP NMVTPGHACT
 QKFSHEEIAM ATVTALRRTV PPAVTGITFL SGGQSEEEAS INLNAINKCP LLKPWALTFS
 YGRALQASAL KAWGGKKENL KAAQEEYVKR ALANSLACQG KYTPSGQAGA AASESLFVSN HAY

Purity: 95 %

Target Details

Target:	ALDOA
Alternative Name:	Fructose-Bisphosphate Aldolase A Protein (ALDOA Products)

Target Details

Background:	Background: Defects in ALDOA are the cause of glycogen storage disease type 12 (GSD12) [MIM:611881], also known as red cell aldolase deficiency. A metabolic disorder associated with increased hepatic glycogen and hemolytic anemia. It may lead to myopathy with exercise intolerance and rhabdomyolysis. Synonyms: Lung cancer antigen NY-LU-1 Muscle-type aldolase.
Molecular Weight:	66.7 kD
NCBI Accession:	NM_000034
UniProt:	P04075
Pathways:	Ribonucleoside Biosynthetic Process

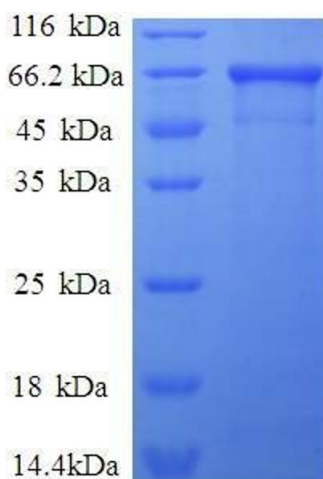
Application Details

Restrictions:	For Research Use only
---------------	-----------------------

Handling

Format:	Lyophilized
Buffer:	6M guanidine hydrochloride, 20mM Tris
Storage:	4 °C

Images



SDS-PAGE

Image 1. Aldolase A, Fructose-Bisphosphate (ALDOA) (AA 2-364), (full length) protein (GST tag)