



[Go to Product page](#)

Datasheet for ABIN7479609

BMI1 Protein (AA 1-250, partial) (GST tag)

1 Image

Overview

Quantity:	100 µg
Target:	BMI1
Protein Characteristics:	AA 1-250, partial
Origin:	Human
Source:	Escherichia coli (E. coli)
Protein Type:	Recombinant
Purification tag / Conjugate:	This BMI1 protein is labelled with GST tag.
Application:	Western Blotting (WB), SDS-PAGE (SDS), ELISA

Product Details

Sequence: MHRTRRIKITELNPHLMCVLCGGYFIDATTIIECLHSFCK
TCIVRYLETSKYCPCIDVQVHKTRPLLNIKSDKTLQDIVY
KLVPLGFKNEMKRRRDFYAAHPSADAANGSNEDRGEVADE
DKRIITDDEIISLSIEFFDQNRDLDRKVNKDKEKSKEEVND
KRYLRCPAAMTVMHLRKFRLSKMDIPNTFQIDVMYEEEEPL
KDYTYLMDIAYIYTWRNGPLPLKYRVRPTCKRMKISHQR DGLTNAGELE

Purity: 95 %

Target Details

Target:	BMI1
Alternative Name:	Polycomb complex protein BMI-1 (BMI1 Products)

Target Details

Background: Background: Component of the Polycomb group (PcG) multiprotein PRC1 complex, a complex required to maintain the transcriptionally repressive state of many genes, including Hox genes, throughout development. PcG PRC1 complex acts via chromatin remodeling and modification of histones, it mediates monoubiquitination of histone H2A 'Lys-119', rendering chromatin heritably changed in its expressibility. In the PRC1 complex, it is required to stimulate the E3 ubiquitin-protein ligase activity of RNF2/RING2. Synonyms: Polycomb group RING finger protein 4 RING finger protein 51.

Molecular Weight: 56.8 kD

NCBI Accession: [NM_005180](#)

UniProt: [P35226](#)

Pathways: [Cell Division Cycle](#), [Autophagy](#)

Application Details

Restrictions: For Research Use only

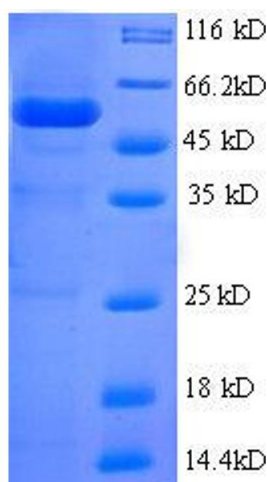
Handling

Format: Lyophilized

Buffer: 6M guanidine hydrochloride, 20mM Tris

Storage: 4 °C

Images



SDS-PAGE

Image 1.