



[Go to Product page](#)

Datasheet for ABIN7479627

NDM-1 Protein (AA 88-146, partial) (His tag)

1 Image

1 Publication

Overview

Quantity:	100 µg
Target:	NDM-1
Protein Characteristics:	AA 88-146, partial
Origin:	Bacteria
Source:	Escherichia coli (E. coli)
Protein Type:	Recombinant
Purification tag / Conjugate:	This NDM-1 protein is labelled with His tag.
Application:	ELISA, Western Blotting (WB)

Product Details

Sequence:	AANGWVEPAT APNFGPLKVF YPGPGHTSDN ITVGIDGTDI AFGGCLIKDS KAKSLGNLG
Purity:	90 %

Target Details

Target:	NDM-1
Background:	Background: Enterobacteriaceae carrying this gene (identified by PCR) have been isolated in Sweden, India, Pakistan, Bangladesh, England, Scotland, Northern Ireland, Australia and the USA. The organisms they were identified in were K.pneumoniae, Enterobacter cloacae, E.coli, Proteus spp, Citrobacter freundii, Morganella morganii, Providencia spp and Klebsille oxytoca. In India most isolates were from community-acquired infections rather than hospital-acquired infections, indicating the gene is widespread in the environment. Confers resistance to many

Target Details

beta-lactam antibiotics, including some carbapenems. Does not confer resistance to the polymixin colistin or the fluoroquinolone ciprofloxacin.

Molecular Weight: 10.1 kD

UniProt: [F8UNN7](#)

Application Details

Restrictions: For Research Use only

Handling

Format: Lyophilized

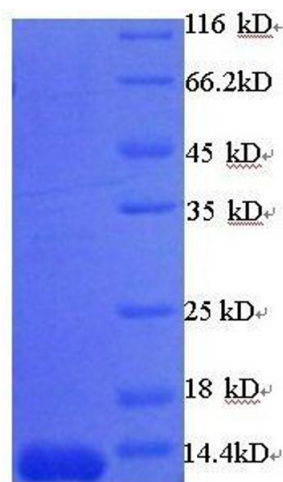
Buffer: PBS buffer

Storage: 4 °C

Publications

Product cited in: Chandar, Poovitha, Ilango, MohanKumar, Parani: "Inhibition of New Delhi Metallo- β -Lactamase 1 (NDM-1) Producing Escherichia coli IR-6 by Selected Plant Extracts and Their Synergistic Actions with Antibiotics." in: **Frontiers in microbiology**, Vol. 8, pp. 1580, (2018) ([PubMed](#)).

Images



SDS-PAGE

Image 1. New Delhi beta-Lactamase NDM-1 (AA 88-146), (partial) protein (His tag)