



[Go to Product page](#)

Datasheet for ABIN748103
anti-IL20RA antibody (AA 135-171)

4 Images

Overview

Quantity:	100 µL
Target:	IL20RA
Binding Specificity:	AA 135-171
Reactivity:	Human, Mouse, Rat
Host:	Rabbit
Clonality:	Polyclonal
Conjugate:	This IL20RA antibody is un-conjugated
Application:	Western Blotting (WB), Immunofluorescence (Paraffin-embedded Sections) (IF (p)), Immunohistochemistry (Paraffin-embedded Sections) (IHC (p))

Product Details

Immunogen:	KLH conjugated synthetic peptide derived from human IL-20RA
Isotype:	IgG
Cross-Reactivity:	Human, Mouse, Rat
Purification:	Purified by Protein A.

Target Details

Target:	IL20RA
Alternative Name:	IL-20r alpha (IL20RA Products)
Background:	Synonyms: CRF2-8, IL-2R1, IL-2RA, IL-2R-alpha, Interleukin-2 receptor subunit alpha, IL-2

Target Details

receptor subunit alpha, Cytokine receptor class-II member 8, Cytokine receptor family 2 member 8, ZcytoR7, IL2RA, UNQ681/PRO1315

Background: The IL2RA/IL2RB dimer is a receptor for IL19, IL2 and IL24. The IL2RA/IL1RB dimer is a receptor for IL26.

Gene ID: 53832

UniProt: [Q9UHF4](#)

Application Details

Application Notes: WB 1:100-1000
IHC-P 1:100-500
IF(IHC-P) 1:50-200

Restrictions: For Research Use only

Handling

Format: Liquid

Concentration: 1 µg/µL

Buffer: Aqueous buffered solution containing 1 % BSA, 50 % glycerol and 0.09 % sodium azide.

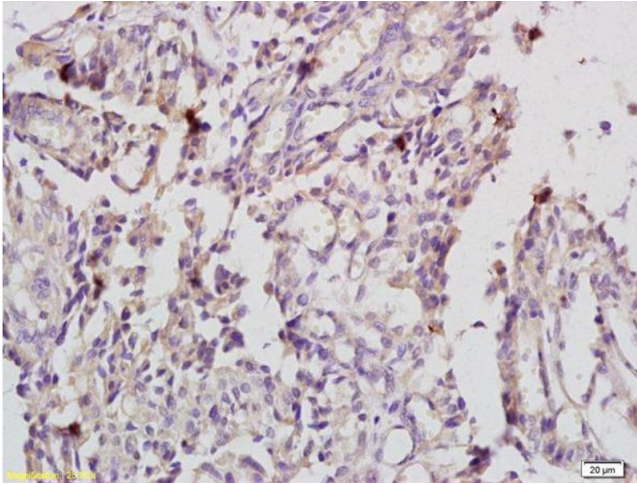
Preservative: Sodium azide

Precaution of Use: This product contains Sodium azide: a POISONOUS AND HAZARDOUS SUBSTANCE, which should be handled by trained staff only.

Storage: -20 °C

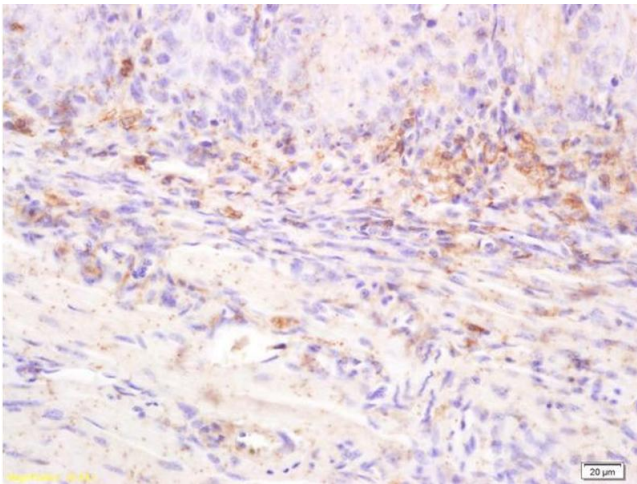
Storage Comment: Store at -20°C for 12 months.

Expiry Date: 12 months



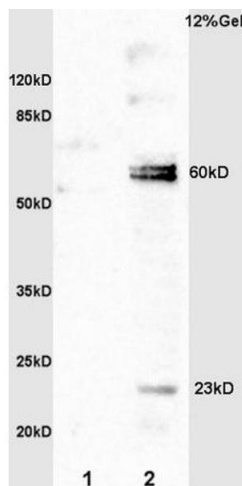
Immunohistochemistry

Image 1. Formalin-fixed and paraffin embedded human endometrial cancer labeled with Anti-IL-20R alpha/IL20RA Polyclonal Antibody, Unconjugated (ABIN748103) at 1:200 followed by conjugation to the secondary antibody



Immunohistochemistry

Image 2. Formalin-fixed and paraffin embedded rat tongue labeled with Anti-IL-20R alpha/IL20RA Polyclonal Antibody, Unconjugated (ABIN748103) at 1:200 followed by conjugation to the secondary antibody



SDS-PAGE

Image 3. L1 rat kidney lysates L2 rat brain lysates probed with Anti IL-20R alpha/IL20RA Polyclonal Antibody, Unconjugated (ABIN748103) at 1:200 overnight at 4 °C. Followed by conjugation to secondary antibody at 1:3000 for 90 min at 37 °C. Predicted band 60kD. Observed band size: 60kD

Please check the [product details page](#) for more images. Overall 4 images are available for ABIN748103.