

Datasheet for ABIN748763
anti-CLEC5A antibody (AA 101-190)

5 Images

[Go to Product page](#)

Overview

Quantity:	100 µL
Target:	CLEC5A
Binding Specificity:	AA 101-190
Reactivity:	Human, Mouse
Host:	Rabbit
Clonality:	Polyclonal
Conjugate:	This CLEC5A antibody is un-conjugated
Application:	Western Blotting (WB), Flow Cytometry (FACS), Immunofluorescence (Cultured Cells) (IF (cc)), Immunofluorescence (Paraffin-embedded Sections) (IF (p)), ELISA, Immunohistochemistry (Frozen Sections) (IHC (fro)), Immunohistochemistry (Paraffin-embedded Sections) (IHC (p)), Immunocytochemistry (ICC)

Product Details

Immunogen:	KLH conjugated synthetic peptide derived from mouse CLEC5A
Isotype:	IgG
Cross-Reactivity:	Human, Mouse
Predicted Reactivity:	Rat,Cow,Pig,Horse,Rabbit
Purification:	Purified by Protein A.

Target Details

Target:	CLEC5A
---------	--------

Target Details

Alternative Name:	CLEC5A (CLEC5A Products)
Background:	<p>Synonyms: Mdl1, Ly100, MDL-1, Clecsf5, C-type lectin domain family 5 member A, C-type lectin superfamily member 5, Myeloid DAP12-associating lectin 1, Clec5a</p> <p>Background: Functions as a positive regulator of osteoclastogenesis. Cell surface receptor that signals via TYROBP. Regulates inflammatory responses. Acts as a key regulator of synovial injury and bone erosion during autoimmune joint inflammation. Critical macrophage receptor for dengue virus serotypes 1-4. The binding of dengue virus to CLEC5A triggers signaling through phosphorylation of TYROBP, this interaction does not result in viral entry but stimulates proinflammatory cytokine release.</p>
Gene ID:	23845
UniProt:	Q9R007

Application Details

Application Notes:	WB 1:300-5000 ELISA 1:500-1000 FCM 1:20-100 IHC-P 1:200-400 IHC-F 1:100-500 IF(IHC-P) 1:50-200 IF(IHC-F) 1:50-200 IF(ICC) 1:50-200 ICC 1:100-500
Restrictions:	For Research Use only

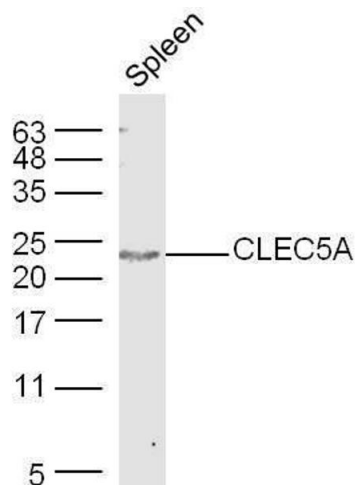
Handling

Format:	Liquid
Concentration:	1 µg/µL
Buffer:	0.01M TBS(pH 7.4) with 1 % BSA, 0.02 % Proclin300 and 50 % Glycerol.
Preservative:	ProClin
Precaution of Use:	This product contains ProClin: a POISONOUS AND HAZARDOUS SUBSTANCE, which should be handled by trained staff only.
Storage:	4 °C,-20 °C

Handling

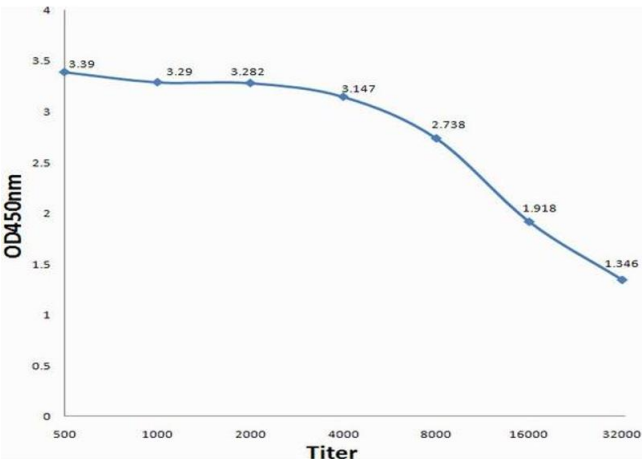
Storage Comment:	Shipped at 4°C. Store at -20°C for one year. Avoid repeated freeze/thaw cycles.
Expiry Date:	12 months

Images



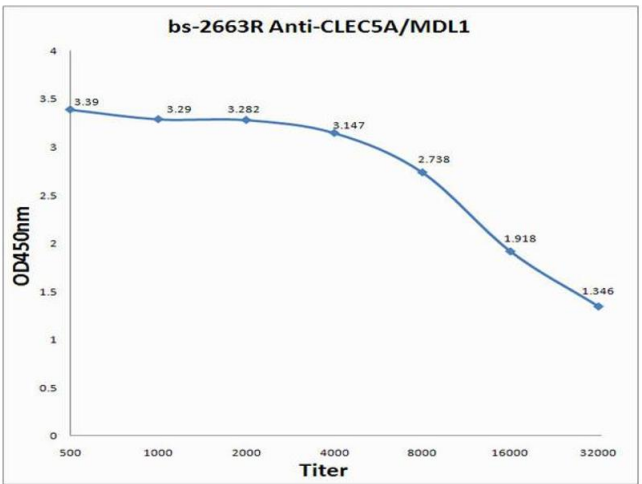
Western Blotting

Image 1. Mouse spleen lysates probed with Rabbit Anti-CLEC5A Polyclonal Antibody, Unconjugated at 1:500 for 90 min at 37°C.



ELISA

Image 2. Antigen: 0.2ug/100ul, Primary: Antiserum, 1:500, 1:1000, 1:2000, 1:4000, 1:8000, 1:16000, 1:32000, Secondary: HRP conjugated Goat-Anti-Rabbit IgG at 1: 5000, TMB staining, Read the data in MicroplateReader by 450nm



ELISA

Image 3. Antigen: 0.2 µg/100 µL Primary: Antiserum, 1:500, 1:1000, 1:2000, 1:4000, 1:8000, 1:16000, 1:32000; Secondary: HRP conjugated Goat-Anti-Rabbit IgG at 1: 5000; TMB staining; Read the data in MicroplateReader by 450

Please check the [product details page](#) for more images. Overall 5 images are available for ABIN748763.