



[Go to Product page](#)

Datasheet for ABIN748958
anti-TSHB antibody (AA 51-138)

1 Image

Overview

Quantity:	100 µL
Target:	TSHB
Binding Specificity:	AA 51-138
Reactivity:	Human
Host:	Mouse
Clonality:	Polyclonal
Application:	ELISA, Immunohistochemistry (Paraffin-embedded Sections) (IHC (p)), Immunofluorescence (Cultured Cells) (IF (cc)), Immunofluorescence (Paraffin-embedded Sections) (IF (p)), Immunohistochemistry (Frozen Sections) (IHC (fro))

Product Details

Immunogen:	KLH conjugated synthetic peptide derived from human TSHB
Isotype:	IgG
Predicted Reactivity:	Human,Mouse,Rat,Cow,Pig,Horse,Rabbit
Purification:	Purified by Protein A.

Target Details

Target:	TSHB
Alternative Name:	Tshb (TSHB Products)
Background:	Synonyms: CHNG4, Thyroid stimulating hormone beta subunit, Thyroid stimulating hormone, beta precursor, Thyrotropin beta subunit, TSHB.

Target Details

Background: Thyroid stimulating hormone, also known as thyrotropin, is secreted from cells in the anterior pituitary called thyrotrophs, finds its receptors on epithelial cells in the thyroid gland, and stimulates that gland to synthesize and release thyroid hormones. TSH is a glycoprotein hormone composed of two subunits which are non covalently bound to one another. The alpha subunit of TSH is also present in two other pituitary glycoprotein hormones, follicle stimulating hormone and luteinizing hormone, and, in primates, in the placental hormone chorionic gonadotropin. Each of these hormones also has a unique beta subunit, which provides receptor specificity. In other words, TSH is composed of alpha subunit bound to the TSH beta subunit, and TSH associates only with its own receptor. Free alpha and beta subunits have essentially no biological activity.

Gene ID: 7252

Pathways: [Thyroid Hormone Synthesis](#), [Peptide Hormone Metabolism](#)

Application Details

Application Notes: ELISA 1:500-1000
IHC-P 1:200-400
IHC-F 1:100-500
IF(IHC-P) 1:50-200
IF(IHC-F) 1:50-200
IF(ICC) 1:50-200

Restrictions: For Research Use only

Handling

Format: Liquid

Concentration: 1 µg/µL

Buffer: 0.01M TBS(pH 7.4) with 1 % BSA, 0.02 % Proclin300 and 50 % Glycerol.

Preservative: ProClin

Precaution of Use: This product contains ProClin: a POISONOUS AND HAZARDOUS SUBSTANCE, which should be handled by trained staff only.

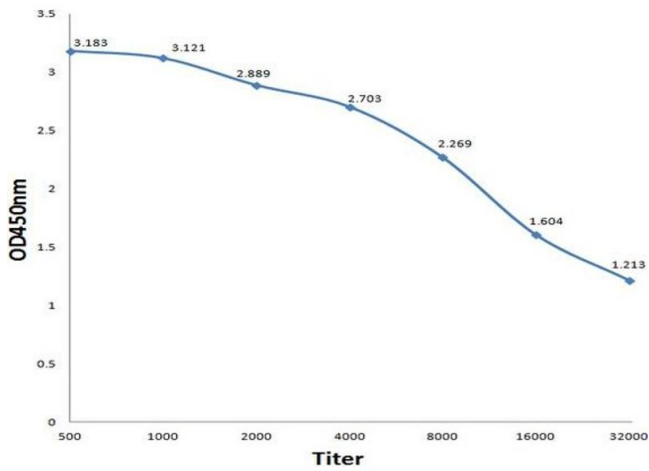
Storage: 4 °C,-20 °C

Storage Comment: Shipped at 4°C. Store at -20°C for one year. Avoid repeated freeze/thaw cycles.

Handling

Expiry Date: 12 months

Images



ELISA

Image 1. Antigen: 0.2ug/100ul, Primary: Antiserum, 1:500, 1:1000, 1:2000, 1:4000, 1:8000, 1:16000, 1:32000, Secondary: HRP conjugated Goat Anti-Mouse IgG at 1: 5000, TMB staining, Read the data in MicroplateReader by 450nm.