

Datasheet for ABIN748973  
**anti-TSH antibody (AA 51-138)**

## 2 Images

[Go to Product page](#)

## Overview

Quantity:	100 µL
Target:	TSH
Binding Specificity:	AA 51-138
Reactivity:	Mouse
Host:	Rabbit
Clonality:	Polyclonal
Conjugate:	This TSH antibody is un-conjugated
Application:	ELISA, Immunofluorescence (Paraffin-embedded Sections) (IF (p)), Immunofluorescence (Cultured Cells) (IF (cc)), Immunohistochemistry (Paraffin-embedded Sections) (IHC (p)), Immunohistochemistry (Frozen Sections) (IHC (fro))

## Product Details

Immunogen:	KLH conjugated synthetic peptide derived from human TSHB
Isotype:	IgG
Cross-Reactivity:	Mouse
Predicted Reactivity:	Human,Rat,Cow,Pig,Horse,Rabbit
Purification:	Purified by Protein A.

## Target Details

Target:	TSH
---------	-----

## Target Details

Alternative Name:	TSH ( <a href="#">TSH Products</a> )
Background:	<p>Synonyms: CHNG4, Thyroid stimulating hormone beta subunit, Thyroid stimulating hormone, beta precursor, Thyrotropin beta subunit, TSHB.</p> <p>Background: Thyroid stimulating hormone, also known as thyrotropin, is secreted from cells in the anterior pituitary called thyrotrophs, finds its receptors on epithelial cells in the thyroid gland, and stimulates that gland to synthesize and release thyroid hormones. TSH is a glycoprotein hormone composed of two subunits which are non covalently bound to one another. The alpha subunit of TSH is also present in two other pituitary glycoprotein hormones, follicle stimulating hormone and luteinizing hormone, and, in primates, in the placental hormone chorionic gonadotropin. Each of these hormones also has a unique beta subunit, which provides receptor specificity. In other words, TSH is composed of alpha subunit bound to the TSH beta subunit, and TSH associates only with its own receptor. Free alpha and beta subunits have essentially no biological activity.</p>
Gene ID:	7252
UniProt:	<a href="#">P01222</a>

## Application Details

Application Notes:	ELISA 1:500-1000 IHC-P 1:200-400 IHC-F 1:100-500 IF(IHC-P) 1:50-200 IF(IHC-F) 1:50-200 IF(ICC) 1:50-200
Restrictions:	For Research Use only

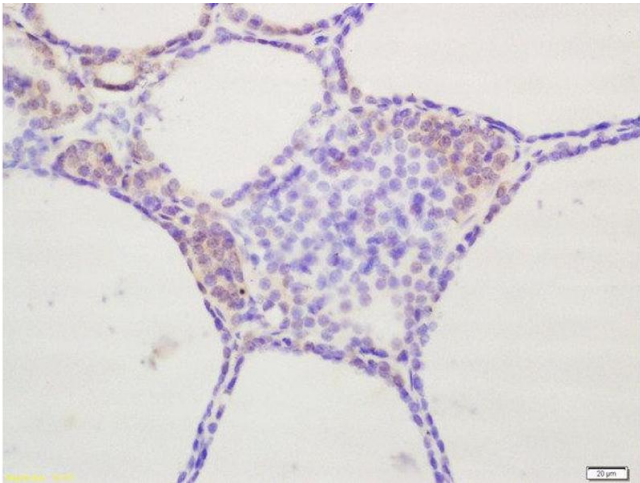
## Handling

Format:	Liquid
Concentration:	1 µg/µL
Buffer:	0.01M TBS( pH 7.4) with 1 % BSA, 0.02 % Proclin300 and 50 % Glycerol.
Preservative:	ProClin
Precaution of Use:	This product contains ProClin: a POISONOUS AND HAZARDOUS SUBSTANCE, which should be handled by trained staff only.

Handling

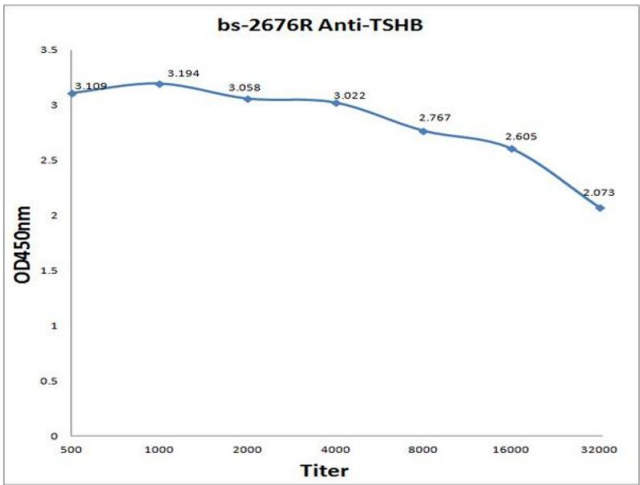
Storage:	4 °C,-20 °C
Storage Comment:	Shipped at 4°C. Store at -20°C for one year. Avoid repeated freeze/thaw cycles.
Expiry Date:	12 months

Images



Immunohistochemistry (Paraffin-embedded Sections)

**Image 1.** Formalin-fixed and paraffin embedded rat thyroid labeled with Rabbit Anti-TSH Polyclonal Antibody, Unconjugated at 1:200 followed by conjugation to the secondary antibody and DAB stainin



ELISA

**Image 2.** Antigen: 0.2 µg/100 µL Primary: Antiserum, 1:500, 1:1000, 1:2000, 1:4000, 1:8000, 1:16000, 1:32000; Secondary: HRP conjugated Goat Anti-Mouse IgG at 1: 5000; TMB staining; Read the data in MicroplateReader by 450nm.