

Datasheet for ABIN7489970

anti-PLEC antibody[Go to Product page](#)**1** Image

Overview

Quantity:	100 µL
Target:	PLEC
Reactivity:	Human, Mouse, Rat
Host:	Rabbit
Clonality:	Monoclonal
Conjugate:	This PLEC antibody is un-conjugated
Application:	ELISA, Immunohistochemistry (Paraffin-embedded Sections) (IHC (p))

Product Details

Immunogen:	Recombinant protein of human Plectin .
Clone:	ARC53240
Isotype:	IgG
Purification:	Affinity purification

Target Details

Target:	PLEC
Alternative Name:	Plectin (PLEC Products)
Background:	<p>Synonyms: HD1; PCN; EBS1; EBS0; PLTN; EBS5A; EBS5B; EBS5C; EBS5D; EBSMD; EBSND; EBSOG; EBSPA; PLEC1; LGMD2Q; PLEC1b; LGMDR17; Plectin</p> <p>Background: Plectin is a large, widely expressed protein that crosslinks the intermediate filament and actin cytoskeleton, mechanically stabilizing cells and tissues. Plectin also plays a</p>

Target Details

role in the regulation of actin dynamics and acts as a scaffold for signaling molecules. Plectin is important in the stabilization of hemidesmosomes, crosslinking them to the intermediate filament network. Research studies have shown that mutations in plectin and other genes coding for hemidesmosomal proteins can cause epidermolysis bullosa, a condition manifested by fragile skin and frequent blistering . Plectin modulates signals to PKC through binding and sequestration of RACK1, the receptor for activated C kinase 1 . Plectin is also involved in the regulation of cytokeratin architecture and cell stress response , signaling through the chemokine receptor CXCR4 and regulation of AMP-activated protein kinase (AMPK) activity and signaling in mouse myotubes .

Gene ID: 5339

UniProt: [Q15149](#)

Application Details

Application Notes: IHC-P 1:100 – 1:1000

Restrictions: For Research Use only

Handling

Format: Liquid

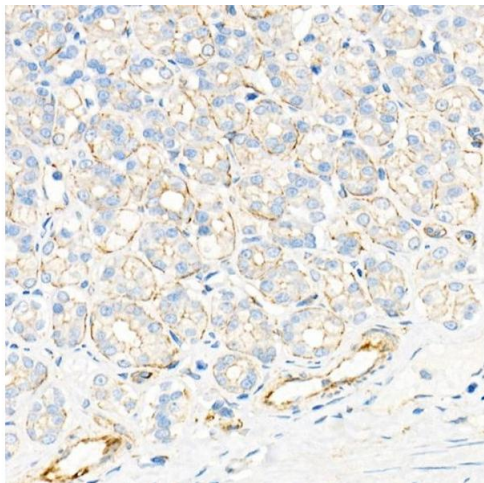
Buffer: PBS with 0.05% proclin300, 0.05% BSA, 50% glycerol, pH7.3.

Preservative: ProClin

Precaution of Use: This product contains ProClin: a POISONOUS AND HAZARDOUS SUBSTANCE which should be handled by trained staff only.

Handling Advice: Avoid freeze / thaw cycles.

Storage: -20 °C



Immunohistochemistry (Paraffin-embedded Sections)

Image 1. Immunohistochemistry analysis of paraffin-embedded rat stomach using Plectin Rabbit mAb at dilution of 1:1000 (40x lens). Perform high pressure antigen retrieval with 10 mM citrate buffer pH 6.0 before commencing with IHC staining protocol.