



[Go to Product page](#)

Datasheet for ABIN7490110
anti-L-Selectin antibody (PE)

1 Image

1 Publication

Overview

Quantity:	25 tests
Target:	L-Selectin (SELL)
Reactivity:	Chemical
Host:	Mouse
Clonality:	Monoclonal
Conjugate:	This L-Selectin antibody is conjugated to PE
Application:	Flow Cytometry (FACS)

Product Details

Immunogen:	PHA stimulated lymphoblasts.
Clone:	FMC46
Isotype:	IgG2b
Cross-Reactivity:	Cow (Bovine), Cynomolgus, Dog (Canine), Rhesus Monkey
Characteristics:	Purified IgG conjugated to R. Phycoerythrin (RPE)

Target Details

Target:	L-Selectin (SELL)
Alternative Name:	CD62L (SELL Products)
Target Type:	Chemical
Background:	Synonyms: LECAM-1, L-SELECTIN

Target Details

Gene ID: 6402

UniProt: [P14151](#)

Application Details

Application Notes: Optimal working dilution should be determined by the investigator.

Restrictions: For Research Use only

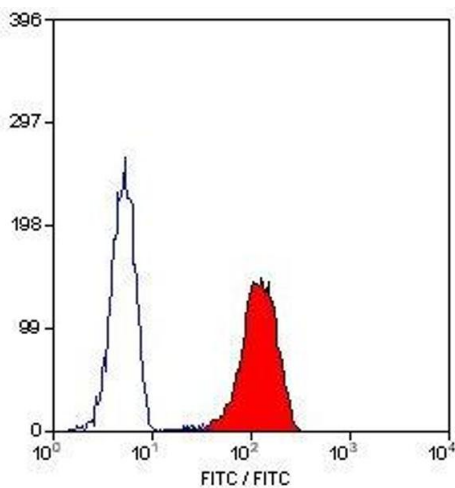
Handling

Format: Lyophilized

Publications

Product cited in: Yoshino, Ami, Terao, Tashiro, Honda: "Upgrading of flow cytometric analysis for absolute counts, cytokines and other antigenic molecules of cynomolgus monkeys (*Macaca fascicularis*) by using anti-human cross-reactive antibodies." in: **Experimental animals / Japanese Association for Laboratory Animal Science**, Vol. 49, Issue 2, pp. 97-110, (2000) ([PubMed](#)).

Images



Flow Cytometry

Image 1.