

Datasheet for ABIN7490113

anti-IL-2 antibody (PE)**1** Image**1** Publication[Go to Product page](#)

Overview

Quantity:	100 tests
Target:	IL-2 (IL2)
Reactivity:	Human, Cynomolgus
Host:	Rat
Clonality:	Monoclonal
Conjugate:	This IL-2 antibody is conjugated to PE
Application:	Flow Cytometry (FACS)

Product Details

Clone:	MQ1-17H12
Isotype:	IgG2a

Target Details

Target:	IL-2 (IL2)
Alternative Name:	IL-2 (IL2 Products)
Gene ID:	3558
UniProt:	P60568
Pathways:	JAK-STAT Signaling , Regulation of Leukocyte Mediated Immunity , Positive Regulation of Immune Effector Process , Production of Molecular Mediator of Immune Response , Activated T Cell Proliferation

Application Details

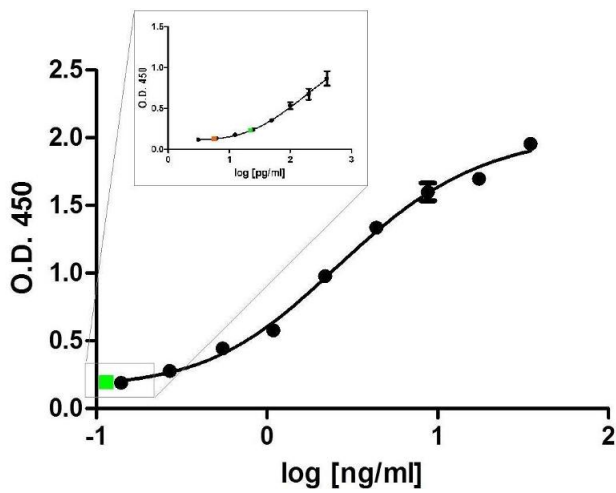
Application Notes: Optimal working dilution should be determined by the investigator.

Restrictions: For Research Use only

Publications

Product cited in: Garbe, Klier, Linnebacher: "Semiallogenic fusions of MSI(+) tumor cells and activated B cells induce MSI-specific T cell responses." in: **BMC cancer**, Vol. 11, pp. 410, (2011) ([PubMed](#)).

Images



ELISA

Image 1.