

Datasheet for ABIN7490464
anti-PLGF antibody



[Go to Product page](#)

1 Image

Overview

Quantity:	100 µg
Target:	PLGF (PGF)
Reactivity:	Human
Host:	Rabbit
Clonality:	Monoclonal
Conjugate:	This PLGF antibody is un-conjugated
Application:	ELISA, Flow Cytometry (FACS)

Product Details

Isotype:	IgG
Characteristics:	Rabbit IgG
Purification:	Purified from cell culture supernatant by affinity chromatography

Target Details

Target:	PLGF (PGF)
Alternative Name:	PGF (PGF Products)
Background:	D12S1900, PGFL, PIGF, PLGF, PIGF-2, SHGC-10760 Description: This gene encodes a growth factor found in placenta which is homologous to vascular endothelial growth factor. Alternatively spliced transcripts encoding different isoforms have been found for this gene.
UniProt:	P49763

Target Details

Pathways: [VEGFR1 Specific Signals](#)

Application Details

Application Notes: ELISA 1:5000-10000, Flow Cyt 1:100

Restrictions: For Research Use only

Handling

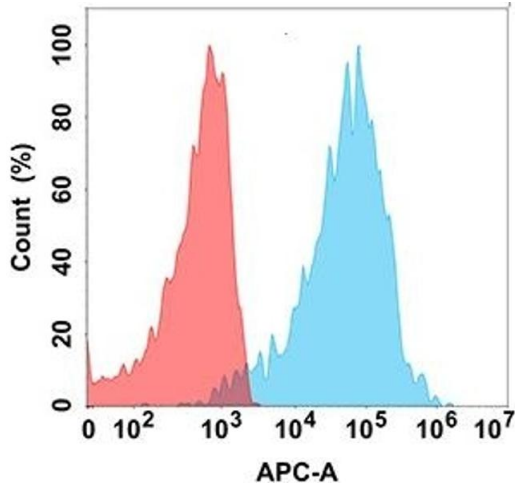
Format: Liquid

Storage: -20 °C, -80 °C

Storage Comment: Store at -20°C to -80°C for 12 months in lyophilized form. After reconstitution, if not intended for use within a month, aliquot and store at -80°C (Avoid repeated freezing and thawing).
Lyophilized proteins are shipped at ambient temperature.

Expiry Date: 12 months

Images



Flow Cytometry

Image 1. Flow cytometry analysis with Anti-PGF (DM190) on Expi293 cells transfected with human PGF (Blue histogram) or Expi293 transfected with irrelevant protein (Red histogram).