



[Go to Product page](#)

Datasheet for ABIN7490468

## anti-ADAM9 antibody

### 1 Image

#### Overview

Quantity:	100 µg
Target:	ADAM9
Reactivity:	Human
Host:	Rabbit
Clonality:	Monoclonal
Conjugate:	This ADAM9 antibody is un-conjugated
Application:	ELISA, Flow Cytometry (FACS)

#### Product Details

Isotype:	IgG
Characteristics:	Rabbit IgG
Purification:	Purified from cell culture supernatant by affinity chromatography

#### Target Details

Target:	ADAM9
Alternative Name:	ADAM9 ( <a href="#">ADAM9 Products</a> )
Background:	<p>CORD9, MCMP, MDC9, Mltng</p> <p>Description: This gene encodes a member of the ADAM (a disintegrin and metalloprotease domain) family. Members of this family are membrane-anchored proteins structurally related to snake venom disintegrins, and have been implicated in a variety of biological processes involving cell-cell and cell-matrix interactions, including fertilization, muscle development, and</p>

## Target Details

neurogenesis. The protein encoded by this gene interacts with SH3 domain-containing proteins, binds mitotic arrest deficient 2 beta protein, and is also involved in TPA-induced ectodomain shedding of membrane-anchored heparin-binding EGF-like growth factor. Several alternatively spliced transcript variants have been identified for this gene.

UniProt: [Q13443](#)

Pathways: [Cellular Response to Molecule of Bacterial Origin, SARS-CoV-2 Protein Interactome](#)

## Application Details

Application Notes: ELISA 1:5000-10000, Flow Cyt 1:100

Restrictions: For Research Use only

## Handling

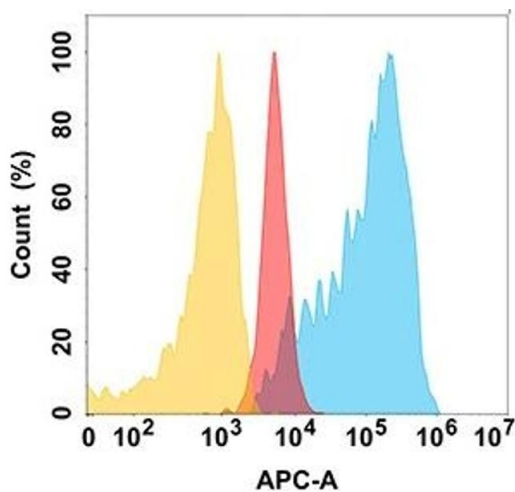
Format: Liquid

Storage: -20 °C,-80 °C

Storage Comment: Store at -20°C to -80°C for 12 months in lyophilized form. After reconstitution, if not intended for use within a month, aliquot and store at -80°C (Avoid repeated freezing and thawing).  
Lyophilized proteins are shipped at ambient temperature.

Expiry Date: 12 months

## Images



### Flow Cytometry

**Image 1.** A protein is highly expressed on the surface of Expi293 cell membrane. Flow cytometry analysis with Anti-A (DM192) on Expi293 cells transfected with human A (Blue histogram) or Expi293 transfected with irrelevant protein (Red histogram), and Isotype antibody on Expi293 transfected with irrelevant protein (Orange histogram).