

Datasheet for ABIN7490472
anti-KIT Ligand antibody



[Go to Product page](#)

1 Image

Overview

Quantity:	100 µg
Target:	KIT Ligand (KITLG)
Reactivity:	Human
Host:	Rabbit
Clonality:	Monoclonal
Application:	ELISA, Flow Cytometry (FACS)

Product Details

Isotype:	IgG
Characteristics:	Rabbit IgG
Purification:	Purified from cell culture supernatant by affinity chromatography

Target Details

Target:	KIT Ligand (KITLG)
Alternative Name:	SCF (KITLG Products)
Background:	<p>DCUA, DFNA69,FPH2,FPHH, Kitl,KL-1,MGF,SCF, SF,SHEP7,SLF,</p> <p>Description: This gene encodes the ligand of the tyrosine-kinase receptor encoded by the KIT locus. This ligand is a pleiotropic factor that acts in utero in germ cell and neural cell development, and hematopoiesis, all believed to reflect a role in cell migration. In adults, it functions pleiotropically, while mostly noted for its continued requirement in hematopoiesis. Two transcript variants encoding different isoforms have been found for this gene.</p>

Target Details

UniProt:	P21583
Pathways:	RTK Signaling, Fc-epsilon Receptor Signaling Pathway, EGFR Signaling Pathway, Neurotrophin Signaling Pathway

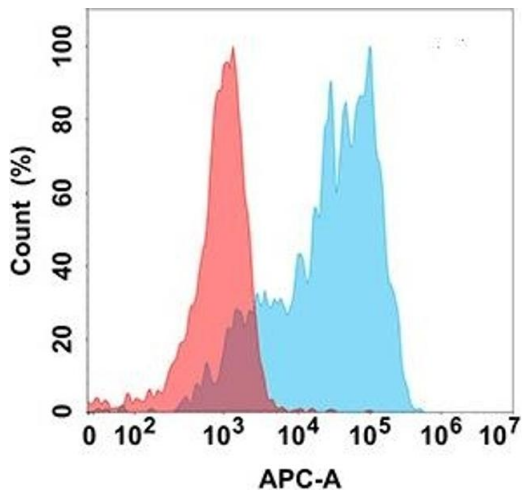
Application Details

Application Notes:	ELISA 1:5000-10000, Flow Cyt 1:100
Restrictions:	For Research Use only

Handling

Format:	Liquid
Storage:	-20 °C,-80 °C
Storage Comment:	Store at -20°C to -80°C for 12 months in lyophilized form. After reconstitution, if not intended for use within a month, aliquot and store at -80°C (Avoid repeated freezing and thawing). Lyophilized proteins are shipped at ambient temperature.
Expiry Date:	12 months

Images



Flow Cytometry

Image 1. Flow cytometry analysis with Anti-SCF (DM194) on Expi293 cells transfected with human SCF (Blue histogram) or Expi293 transfected with irrelevant protein (Red histogram).