

Datasheet for ABIN7490486  
**anti-TNFSF8 antibody**



[Go to Product page](#)

1 Image

## Overview

Quantity:	100 µg
Target:	TNFSF8
Reactivity:	Human
Host:	Rabbit
Clonality:	Monoclonal
Conjugate:	This TNFSF8 antibody is un-conjugated
Application:	ELISA, Flow Cytometry (FACS)

## Product Details

Isotype:	IgG
Characteristics:	Rabbit IgG
Purification:	Purified from cell culture supernatant by affinity chromatography

## Target Details

Target:	TNFSF8
Alternative Name:	CD30 Ligand ( <a href="#">TNFSF8 Products</a> )
Background:	CD30-L,CD153,TNFSF8,CD30L,CD30LG,CD153 antigen,CD30 antigen ligand,CD30 Ligand, Description: The protein encoded by this gene is a cytokine that belongs to the tumor necrosis factor (TNF) ligand family. This cytokine is a ligand for TNFRSF8/CD30, which is a cell surface antigen and a marker for Hodgkin lymphoma and related hematologic malignancies. The engagement of this cytokine expressed on B cell surface plays an inhibitory role in modulating

Target Details

Ig class switch. This cytokine was shown to enhance cell proliferation of some lymphoma cell lines, while to induce cell death and reduce cell proliferation of other lymphoma cell lines. The pleiotropic biologic activities of this cytokine on different CD30 lymphoma cell lines may play a pathophysiologic role in Hodgkin's and some non-Hodgkin's lymphomas. Two transcript variants encoding different isoforms have been found for this gene.

UniProt: [P32971](#)

Application Details

Application Notes: ELISA 1:5000-10000, Flow Cyt 1:100

Restrictions: For Research Use only

Handling

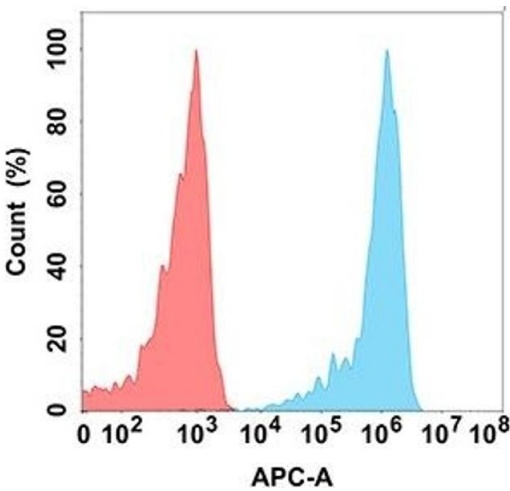
Format: Liquid

Storage: -20 °C,-80 °C

Storage Comment: Store at -20°C to -80°C for 12 months in lyophilized form. After reconstitution, if not intended for use within a month, aliquot and store at -80°C (Avoid repeated freezing and thawing).  
Lyophilized proteins are shipped at ambient temperature.

Expiry Date: 12 months

Images



**Flow Cytometry**

**Image 1.** Flow cytometry analysis with Anti-CD30L (DM201) on Expi293 cells transfected with human CD30L (Blue histogram) or Expi293 transfected with irrelevant protein (Red histogram).