

## Datasheet for ABIN7490520 **anti-FCGR3A antibody**



[Go to Product page](#)

### 1 Image

#### Overview

Quantity:	100 µg
Target:	FCGR3A
Reactivity:	Human
Host:	Rabbit
Clonality:	Chimeric
Conjugate:	This FCGR3A antibody is un-conjugated
Application:	ELISA, Flow Cytometry (FACS)

#### Product Details

Isotype:	IgG1
Fragment:	Fc fragment
Characteristics:	Rabbit/Human Fc chimeric IgG1
Purification:	Purified from cell culture supernatant by affinity chromatography

#### Target Details

Target:	FCGR3A
Alternative Name:	FCGR3A ( <a href="#">FCGR3A Products</a> )
Background:	FCGR3A,CD16A,FCG3,FCGR3,IGFR3, Description: This gene encodes a receptor for the Fc portion of immunoglobulin G, and it is involved in the removal of antigen-antibody complexes from the circulation, as well as other other antibody-dependent responses. This gene (FCGR3A) is highly similar to another nearby

## Target Details

gene (FCGR3B) located on chromosome 1. The receptor encoded by this gene is expressed on natural killer (NK) cells as an integral membrane glycoprotein anchored through a transmembrane peptide, whereas FCGR3B is expressed on polymorphonuclear neutrophils (PMN) where the receptor is anchored through a phosphatidylinositol (PI) linkage. Mutations in this gene have been linked to susceptibility to recurrent viral infections, susceptibility to systemic lupus erythematosus, and alloimmune neonatal neutropenia. Alternatively spliced transcript variants encoding different isoforms have been found for this gene.

UniProt: [P08637](#)

## Application Details

Application Notes: ELISA 1:5000-10000, Flow Cyt 1:100

Restrictions: For Research Use only

## Handling

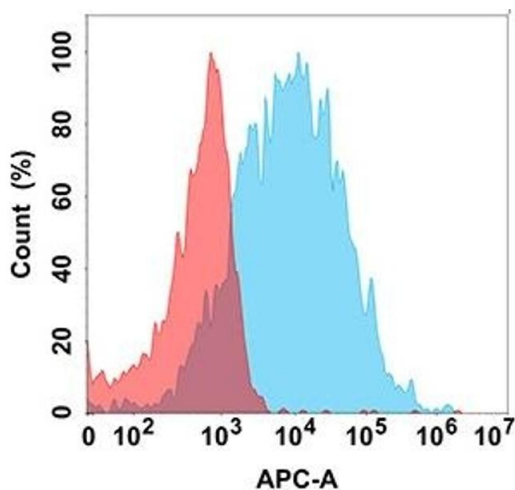
Format: Liquid

Storage: -20 °C,-80 °C

Storage Comment: Store at -20°C to -80°C for 12 months in lyophilized form. After reconstitution, if not intended for use within a month, aliquot and store at -80°C (Avoid repeated freezing and thawing).  
Lyophilized proteins are shipped at ambient temperature.

Expiry Date: 12 months

## Images



### Flow Cytometry

**Image 1.** Flow cytometry analysis with Anti-FA on Expi293 cells transfected with human FA (Blue histogram) or Expi293 transfected with irrelevant protein (Red histogram).