

Datasheet for ABIN7490524

**anti-IFNAR1 antibody**[Go to Product page](#)**1** Image

## Overview

Quantity:	100 µg
Target:	IFNAR1
Reactivity:	Human
Host:	Rabbit
Clonality:	Chimeric
Conjugate:	This IFNAR1 antibody is un-conjugated
Application:	ELISA, Flow Cytometry (FACS)

## Product Details

Isotype:	IgG1
Fragment:	Fc fragment
Characteristics:	Rabbit/Human Fc chimeric IgG1
Purification:	Purified from cell culture supernatant by affinity chromatography

## Target Details

Target:	IFNAR1
Alternative Name:	IFNAR1 ( <a href="#">IFNAR1 Products</a> )
Background:	<p>Interferon alpha/beta receptor 1,IFN-R-1,IFN-alpha/beta receptor 1,CRF2-1,Type I interferon receptor 1</p> <p>Description: The protein encoded by this gene is a type I membrane protein that forms one of the two chains of a receptor for interferons alpha and beta. Binding and activation of the</p>

Target Details

receptor stimulates Janus protein kinases, which in turn phosphorylate several proteins, including STAT1 and STAT2. The protein belongs to the type II cytokine receptor family and functions as an antiviral factor.

UniProt: [P17181](#)

Pathways: [JAK-STAT Signaling](#), [Hepatitis C](#)

Application Details

Application Notes: ELISA 1:5000-10000, Flow Cyt 1:100

Restrictions: For Research Use only

Handling

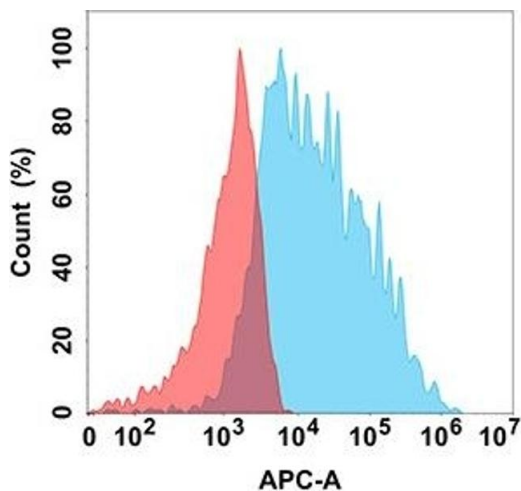
Format: Liquid

Storage: -20 °C,-80 °C

Storage Comment: Store at -20°C to -80°C for 12 months in lyophilized form. After reconstitution, if not intended for use within a month, aliquot and store at -80°C (Avoid repeated freezing and thawing).  
Lyophilized proteins are shipped at ambient temperature.

Expiry Date: 12 months

Images



**Flow Cytometry**

**Image 1.** Flow cytometry analysis with Anti-IF on Expi293 cells transfected with human IF (Blue histogram) or Expi293 transfected with irrelevant protein (Red histogram).