



[Go to Product page](#)

Datasheet for ABIN7490528
anti-TREM2 antibody

1 Image

Overview

Quantity:	100 µg
Target:	TREM2
Reactivity:	Human
Host:	Rabbit
Clonality:	Chimeric
Conjugate:	This TREM2 antibody is un-conjugated
Application:	ELISA, Flow Cytometry (FACS)

Product Details

Isotype:	IgG1
Fragment:	Fc fragment
Characteristics:	Rabbit/Human Fc chimeric IgG1
Purification:	Purified from cell culture supernatant by affinity chromatography

Target Details

Target:	TREM2
Alternative Name:	TREM2 (TREM2 Products)
Background:	PLOSL2, TREM-2, Trem2a, Trem2b, Trem2c, Description: This gene encodes a membrane protein that forms a receptor signaling complex with the TYRO protein tyrosine kinase binding protein. The encoded protein functions in immune response and may be involved in chronic inflammation by triggering the production of

Target Details

constitutive inflammatory cytokines. Defects in this gene are a cause of polycystic lipomembranous osteodysplasia with sclerosing leukoencephalopathy (PLOS). Alternative splicing results in multiple transcript variants encoding different isoforms.

UniProt: [Q9NZC2](#)

Application Details

Application Notes: ELISA 1:5000-10000, Flow Cyt 1:100

Restrictions: For Research Use only

Handling

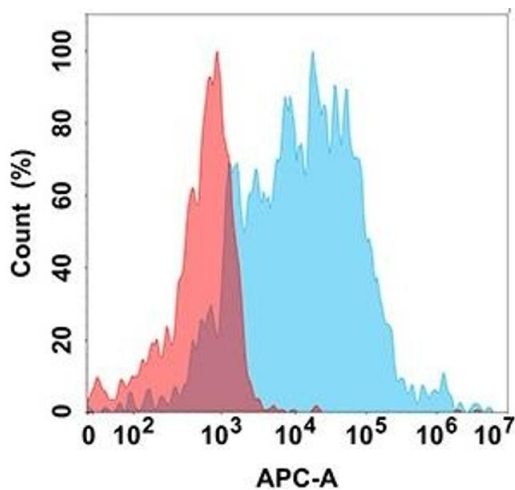
Format: Liquid

Storage: -20 °C,-80 °C

Storage Comment: Store at -20°C to -80°C for 12 months in lyophilized form. After reconstitution, if not intended for use within a month, aliquot and store at -80°C (Avoid repeated freezing and thawing). Lyophilized proteins are shipped at ambient temperature.

Expiry Date: 12 months

Images



Flow Cytometry

Image 1. Flow cytometry analysis with Anti-T on Expi293 cells transfected with human T (Blue histogram) or Expi293 transfected with irrelevant protein (Red histogram).