



Datasheet for ABIN7490532  
**anti-IL21 Receptor antibody**



[Go to Product page](#)

1 Image

Overview

Quantity:	100 µg
Target:	IL21 Receptor (IL21R)
Reactivity:	Human
Host:	Rabbit
Clonality:	Chimeric
Conjugate:	This IL21 Receptor antibody is un-conjugated
Application:	ELISA, Flow Cytometry (FACS)

Product Details

Isotype:	IgG1
Fragment:	Fc fragment
Characteristics:	Rabbit/Human Fc chimeric IgG1
Purification:	Purified from cell culture supernatant by affinity chromatography

Target Details

Target:	IL21 Receptor (IL21R)
Alternative Name:	IL21R ( <a href="#">IL21R Products</a> )
Background:	CD360, IMD56, NILR, Description: The protein encoded by this gene is a cytokine receptor for interleukin 21 (IL21). It belongs to the type I cytokine receptors, and has been shown to form a heterodimeric receptor complex with the common gamma-chain, a receptor subunit also shared by the receptors for

## Target Details

interleukin 2, 4, 7, 9, and 15. This receptor transduces the growth promoting signal of IL21, and is important for the proliferation and differentiation of T cells, B cells, and natural killer (NK) cells. The ligand binding of this receptor leads to the activation of multiple downstream signaling molecules, including JAK1, JAK3, STAT1, and STAT3. Knockout studies of a similar gene in mouse suggest a role for this gene in regulating immunoglobulin production. Three alternatively spliced transcript variants have been described.

UniProt: [Q9HBE5](#)

Pathways: [JAK-STAT Signaling](#)

## Application Details

Application Notes: ELISA 1:5000-10000, Flow Cyt 1:100

Restrictions: For Research Use only

## Handling

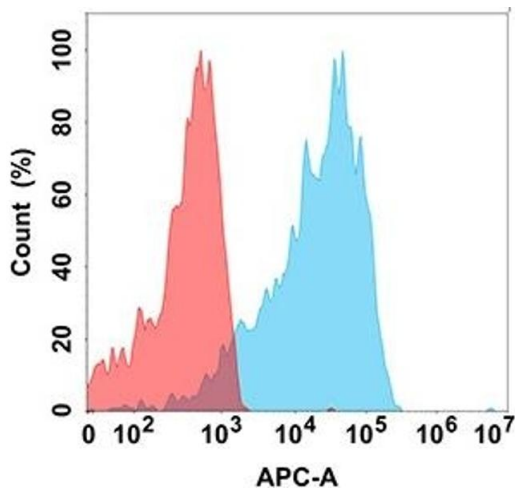
Format: Liquid

Storage: -20 °C,-80 °C

Storage Comment: Store at -20°C to -80°C for 12 months in lyophilized form. After reconstitution, if not intended for use within a month, aliquot and store at -80°C (Avoid repeated freezing and thawing).  
Lyophilized proteins are shipped at ambient temperature.

Expiry Date: 12 months

## Images



### Flow Cytometry

**Image 1.** Flow cytometry analysis with Anti-IL21R on Expi293 cells transfected with human IL21R (Blue histogram) or Expi293 transfected with irrelevant protein (Red histogram).