



[Go to Product page](#)

Datasheet for ABIN7490536
anti-GPRC5D antibody (PE)

1 Image

Overview

Quantity:	100 tests
Target:	GPRC5D
Reactivity:	Human
Host:	Rabbit
Clonality:	Monoclonal
Conjugate:	This GPRC5D antibody is conjugated to PE
Application:	Flow Cytometry (FACS)

Product Details

Isotype:	IgG
Characteristics:	Rabbit IgG
Purification:	Purified from cell culture supernatant by affinity chromatography

Target Details

Target:	GPRC5D
Alternative Name:	GPRC5D (GPRC5D Products)
Background:	GPRC5D, Description: The protein encoded by this gene is a member of the G protein-coupled receptor family, however, the specific function of this gene has not yet been determined.
UniProt:	Q9NZD1

Application Details

Application Notes: Flow Cyt 1:100

Restrictions: For Research Use only

Handling

Format: Liquid

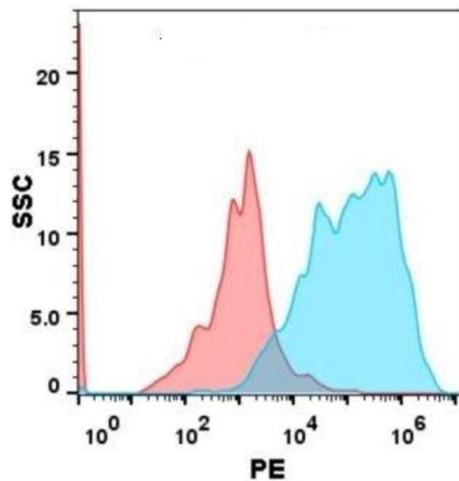
Storage: -20 °C,-80 °C

Storage Comment: Store at -20°C to -80°C for 12 months in lyophilized form. After reconstitution, if not intended for use within a month, aliquot and store at -80°C (Avoid repeated freezing and thawing).

Lyophilized proteins are shipped at ambient temperature.

Expiry Date: 12 months

Images



Flow Cytometry

Image 1. Flow cytometry analysis with 100 μ L of 1:100 dilution PE-conjugated Anti-GD(DM91) mAb (ABIN7092892, ABIN7272750 and ABIN7289739P) on Expi293 cells transfected with Human GD protein (Blue histogram) or Expi293 transfected with irrelevant protein (Red histogram).