

Datasheet for ABIN7490567

anti-IL-5 antibody[Go to Product page](#)**1** Image

Overview

Quantity:	100 µg
Target:	IL-5 (IL5)
Reactivity:	Human
Host:	Rabbit
Clonality:	Chimeric
Conjugate:	This IL-5 antibody is un-conjugated
Application:	Flow Cytometry (FACS)

Product Details

Isotype:	IgG1
Fragment:	Fc fragment
Characteristics:	Rabbit/Human Fc chimeric IgG1
Purification:	Purified from cell culture supernatant by affinity chromatography

Target Details

Target:	IL-5 (IL5)
Alternative Name:	IL5 (IL5 Products)
Background:	IL-5,TRF,Interleukin-5,EDF, Description: This gene encodes a cytokine that acts as a growth and differentiation factor for both B cells and eosinophils. The encoded cytokine plays a major role in the regulation of eosinophil formation, maturation, recruitment and survival. The increased production of this

Target Details

cytokine may be related to pathogenesis of eosinophil-dependent inflammatory diseases. This cytokine functions by binding to its receptor, which is a heterodimer, whose beta subunit is shared with the receptors for interleukine 3 (IL3) and colony stimulating factor 2 (CSF2/GM-CSF). This gene is located on chromosome 5 within a cytokine gene cluster which includes interleukin 4 (IL4), interleukin 13 (IL13), and CSF2 . This gene, IL4, and IL13 may be regulated coordinately by long-range regulatory elements spread over 120 kilobases on chromosome 5q31.

UniProt: [P05113](#)

Pathways: [JAK-STAT Signaling](#), [Positive Regulation of Peptide Hormone Secretion](#), [Production of Molecular Mediator of Immune Response](#), [Feeding Behaviour](#)

Application Details

Application Notes: Flow Cyt 1:100

Restrictions: For Research Use only

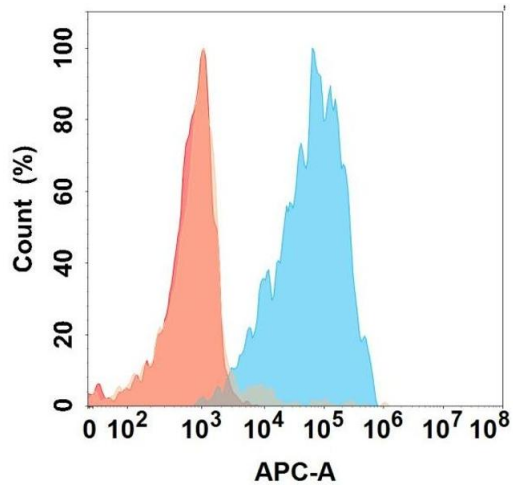
Handling

Format: Liquid

Storage: -20 °C,-80 °C

Storage Comment: Store at -20°C to -80°C for 12 months in lyophilized form. After reconstitution, if not intended for use within a month, aliquot and store at -80°C (Avoid repeated freezing and thawing).
Lyophilized proteins are shipped at ambient temperature.

Expiry Date: 12 months



Flow Cytometry

Image 1. Flow cytometry analysis with Anti-IL5 on Expi293 cells transfected with human IL5 (Blue histogram) or Expi293 transfected with irrelevant protein (Red histogram).