

Datasheet for ABIN7490583

anti-IL11RA antibody[Go to Product page](#)**1** Image

Overview

Quantity:	100 µg
Target:	IL11RA
Reactivity:	Human
Host:	Rabbit
Clonality:	Chimeric
Conjugate:	This IL11RA antibody is un-conjugated
Application:	Flow Cytometry (FACS)

Product Details

Isotype:	IgG1
Fragment:	Fc fragment
Characteristics:	Rabbit/Human Fc chimeric IgG1
Purification:	Purified from cell culture supernatant by affinity chromatography

Target Details

Target:	IL11RA
Alternative Name:	IL11RA (IL11RA Products)
Background:	IL-11 R alpha,IL-11 RA,IL11RA,Interleukin-11 receptor subunit alpha,IL-11 receptor subunit alpha,IL-11R subunit alpha,IL-11R-alpha, Description: Interleukin 11 is a stromal cell-derived cytokine that belongs to a family of pleiotropic and redundant cytokines that use the gp130 transducing subunit in their high affinity

Target Details

receptors. This gene encodes the IL-11 receptor, which is a member of the hematopoietic cytokine receptor family. This particular receptor is very similar to ciliary neurotrophic factor, since both contain an extracellular region with a 2-domain structure composed of an immunoglobulin-like domain and a cytokine receptor-like domain. Multiple alternatively spliced transcript variants have been found for this gene.

UniProt: [Q14626](#)

Pathways: [JAK-STAT Signaling, Growth Factor Binding](#)

Application Details

Application Notes: Flow Cyt 1:100

Restrictions: For Research Use only

Handling

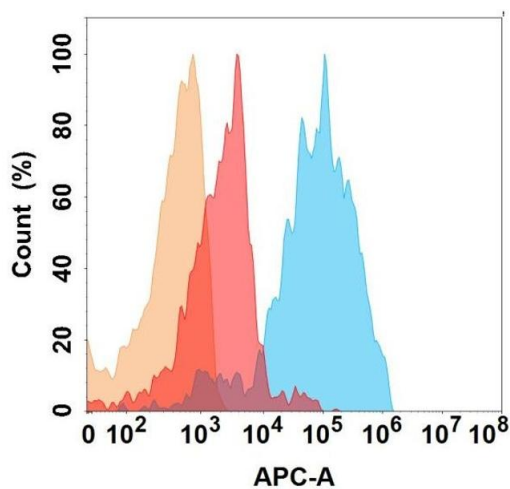
Format: Liquid

Storage: -20 °C,-80 °C

Storage Comment: Store at -20°C to -80°C for 12 months in lyophilized form. After reconstitution, if not intended for use within a month, aliquot and store at -80°C (Avoid repeated freezing and thawing).
Lyophilized proteins are shipped at ambient temperature.

Expiry Date: 12 months

Images



Flow Cytometry

Image 1. IL11RA protein is highly expressed on the surface of Expi293 cell membrane. Flow cytometry analysis with Anti-IL11RA on Expi293 cells transfected with human IL11RA (Blue histogram) or Expi293 transfected with irrelevant protein (Red histogram), and Isotype antibody on Expi293 transfected with irrelevant protein (Orange histogram).