

Datasheet for ABIN7490587  
**anti-IL4 Receptor antibody**



[Go to Product page](#)

1 Image

## Overview

Quantity:	100 µg
Target:	IL4 Receptor (IL4R)
Reactivity:	Human
Host:	Rabbit
Clonality:	Chimeric
Conjugate:	This IL4 Receptor antibody is un-conjugated
Application:	Flow Cytometry (FACS)

## Product Details

Isotype:	IgG1
Fragment:	Fc fragment
Characteristics:	Rabbit/Human Fc chimeric IgG1
Purification:	Purified from cell culture supernatant by affinity chromatography

## Target Details

Target:	IL4 Receptor (IL4R)
Alternative Name:	IL4RA ( <a href="#">IL4R Products</a> )
Background:	CD124, IL-4RA, IL4RA, Description: This gene encodes the alpha chain of the interleukin-4 receptor, a type I transmembrane protein that can bind interleukin 4 and interleukin 13 to regulate IgE production. The encoded protein also can bind interleukin 4 to promote differentiation of Th2 cells. A

## Target Details

soluble form of the encoded protein can be produced by proteolysis of the membrane-bound protein, and this soluble form can inhibit IL4-mediated cell proliferation and IL5 upregulation by T-cells. Allelic variations in this gene have been associated with atopy, a condition that can manifest itself as allergic rhinitis, sinusitis, asthma, or eczema. Polymorphisms in this gene are also associated with resistance to human immunodeficiency virus type-1 infection. Alternate splicing results in multiple transcript variants.

UniProt: [P24394](#)

Pathways: [JAK-STAT Signaling, Positive Regulation of Immune Effector Process](#)

## Application Details

Application Notes: Flow Cyt 1:100

Restrictions: For Research Use only

## Handling

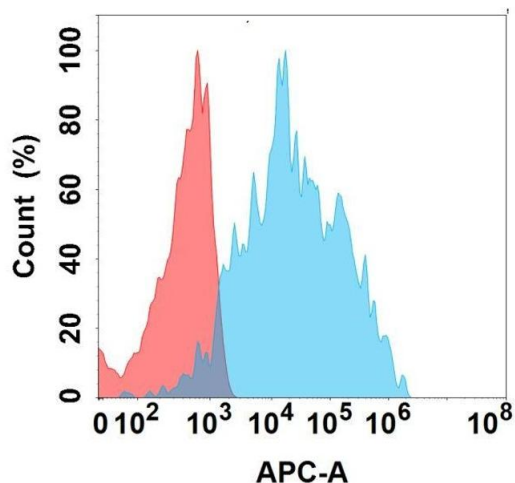
Format: Liquid

Storage: -20 °C,-80 °C

Storage Comment: Store at -20°C to -80°C for 12 months in lyophilized form. After reconstitution, if not intended for use within a month, aliquot and store at -80°C (Avoid repeated freezing and thawing).  
Lyophilized proteins are shipped at ambient temperature.

Expiry Date: 12 months

## Images



### Flow Cytometry

**Image 1.** Flow cytometry analysis with Anti-IL4RA on Expi293 cells transfected with human IL4RA (Blue histogram) or Expi293 transfected with irrelevant protein (Red histogram).