

Datasheet for ABIN7490598  
**anti-KLRC1 antibody**



[Go to Product page](#)

1 Image

## Overview

Quantity:	100 µg
Target:	KLRC1
Reactivity:	Human
Host:	Rabbit
Clonality:	Chimeric
Conjugate:	This KLRC1 antibody is un-conjugated
Application:	Flow Cytometry (FACS)

## Product Details

Isotype:	IgG1
Fragment:	Fc fragment
Characteristics:	Rabbit/Human Fc chimeric IgG1
Purification:	Purified from cell culture supernatant by affinity chromatography

## Target Details

Target:	KLRC1
Alternative Name:	NKG2A ( <a href="#">KLRC1 Products</a> )
Background:	CD159A, NKG2, NKG2A, Description: Natural killer (NK) cells are lymphocytes that can mediate lysis of certain tumor cells and virus-infected cells without previous activation. They can also regulate specific humoral and cell-mediated immunity. The protein encoded by this gene belongs to the killer cell

## Target Details

lectin-like receptor family, also called NKG2 family, which is a group of transmembrane proteins preferentially expressed in NK cells. This family of proteins is characterized by the type II membrane orientation and the presence of a C-type lectin domain. This protein forms a complex with another family member, KLRD1/CD94, and has been implicated in the recognition of the MHC class I HLA-E molecules in NK cells. The genes of NKG2 family members form a killer cell lectin-like receptor gene cluster on chromosome 12. Multiple alternatively spliced transcript variants encoding distinct isoforms have been observed.

UniProt: [P26715](#)

## Application Details

Application Notes: Flow Cyt 1:100

Restrictions: For Research Use only

## Handling

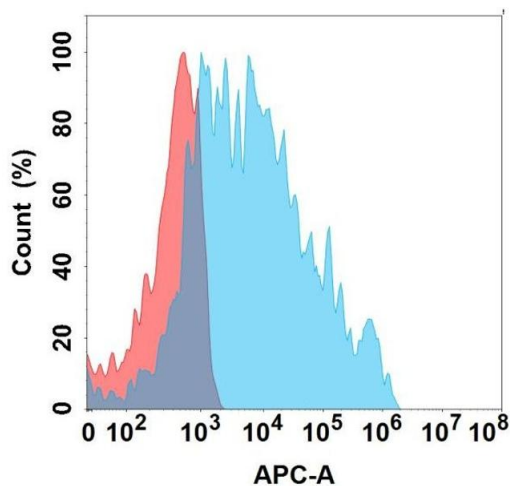
Format: Liquid

Storage: -20 °C,-80 °C

Storage Comment: Store at -20°C to -80°C for 12 months in lyophilized form. After reconstitution, if not intended for use within a month, aliquot and store at -80°C (Avoid repeated freezing and thawing).  
Lyophilized proteins are shipped at ambient temperature.

Expiry Date: 12 months

## Images



### Flow Cytometry

**Image 1.** Flow cytometry analysis with Anti-A on Expi293 cells transfected with human A (Blue histogram) or Expi293 transfected with irrelevant protein (Red histogram).