

Datasheet for ABIN7490606

anti-Complement Factor B antibody[Go to Product page](#)**1** Image

Overview

Quantity:	100 µg
Target:	Complement Factor B (CFB)
Reactivity:	Human
Host:	Rabbit
Clonality:	Chimeric
Application:	Flow Cytometry (FACS)

Product Details

Isotype:	IgG1
Fragment:	Fc fragment
Characteristics:	Rabbit/Human Fc chimeric IgG1
Purification:	Purified from cell culture supernatant by affinity chromatography

Target Details

Target:	Complement Factor B (CFB)
Alternative Name:	CFB (CFB Products)
Background:	AHUS4, ARMD14, BF, BFD, CFAB, CFBD, FB, FBI12, GBG, H2-Bf, PBF2 Description: This gene encodes complement factor B, a component of the alternative pathway of complement activation. Factor B circulates in the blood as a single chain polypeptide. Upon activation of the alternative pathway, it is cleaved by complement factor D yielding the noncatalytic chain Ba and the catalytic subunit Bb. The active subunit Bb is a serine protease

Target Details

which associates with C3b to form the alternative pathway C3 convertase. Bb is involved in the proliferation of preactivated B lymphocytes, while Ba inhibits their proliferation. This gene localizes to the major histocompatibility complex (MHC) class III region on chromosome 6. This cluster includes several genes involved in regulation of the immune reaction. Polymorphisms in this gene are associated with a reduced risk of age-related macular degeneration. The polyadenylation site of this gene is 421 bp from the 5' end of the gene for complement component 2.

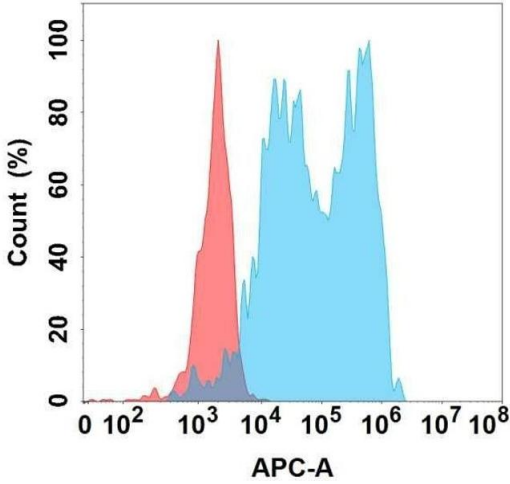
UniProt:	P00751
Pathways:	Complement System , Proton Transport , Ribonucleoside Biosynthetic Process

Application Details

Application Notes:	Flow Cyt 1:100
Restrictions:	For Research Use only

Handling

Format:	Liquid
Storage:	-20 °C,-80 °C
Storage Comment:	Store at -20°C to -80°C for 12 months in lyophilized form. After reconstitution, if not intended for use within a month, aliquot and store at -80°C (Avoid repeated freezing and thawing). Lyophilized proteins are shipped at ambient temperature.
Expiry Date:	12 months



Flow Cytometry

Image 1. Flow cytometry analysis with Anti-CFB on Expi293 cells transfected with human CFB (Blue histogram) or Expi293 transfected with irrelevant protein (Red histogram).