

Datasheet for ABIN7490614
anti-GPR75 antibody



[Go to Product page](#)

1 Image

Overview

| | |
|--------------|-----------------------|
| Quantity: | 100 µg |
| Target: | GPR75 |
| Reactivity: | Human |
| Host: | Rabbit |
| Clonality: | Chimeric |
| Application: | Flow Cytometry (FACS) |

Product Details

| | |
|------------------|---|
| Isotype: | IgG1 |
| Fragment: | Fc fragment |
| Characteristics: | Rabbit/Human Fc chimeric IgG1 |
| Purification: | Purified from cell culture supernatant by affinity chromatography |

Target Details

| | |
|-------------------|---|
| Target: | GPR75 |
| Alternative Name: | GPR75 (GPR75 Products) |
| Background: | Probable G-protein coupled receptor 75, Description: GPR75 is a member of the G protein-coupled receptor family. GPRs are cell surface receptors that activate guanine-nucleotide binding proteins upon the binding of a ligand. |
| UniProt: | O95800 |

Application Details

Application Notes: Flow Cyt 1:100

Restrictions: For Research Use only

Handling

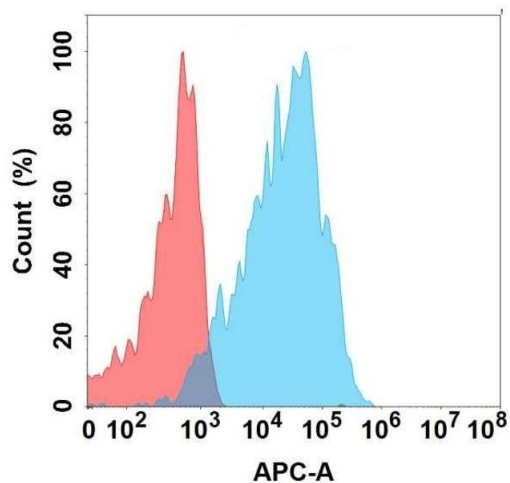
Format: Liquid

Storage: -20 °C,-80 °C

Storage Comment: Store at -20°C to -80°C for 12 months in lyophilized form. After reconstitution, if not intended for use within a month, aliquot and store at -80°C (Avoid repeated freezing and thawing).
Lyophilized proteins are shipped at ambient temperature.

Expiry Date: 12 months

Images



Flow Cytometry

Image 1. Flow cytometry analysis with Anti- on Expi293 cells transfected with human (Blue histogram) or Expi293 transfected with irrelevant protein (Red histogram).