



[Go to Product page](#)

Datasheet for ABIN7490634  
**anti-Ectodysplasin A antibody**

1 Image

Overview

Quantity:	100 µg
Target:	Ectodysplasin A (EDA)
Reactivity:	Human
Host:	Rabbit
Clonality:	Chimeric
Conjugate:	This Ectodysplasin A antibody is un-conjugated
Application:	Flow Cytometry (FACS)

Product Details

Isotype:	IgG1
Fragment:	Fc fragment
Characteristics:	Rabbit/Human Fc chimeric IgG1
Purification:	Purified from cell culture supernatant by affinity chromatography

Target Details

Target:	Ectodysplasin A (EDA)
Alternative Name:	EDA ( <a href="#">EDA Products</a> )
Background:	ED1, EDA2, Description: The protein encoded by this gene is a type II membrane protein that can be cleaved by furin to produce a secreted form. The encoded protein, which belongs to the tumor necrosis factor family, acts as a homotrimer and may be involved in cell-cell signaling during the

## Target Details

development of ectodermal organs. Defects in this gene are a cause of ectodermal dysplasia, anhidrotic, which is also known as X-linked hypohidrotic ectodermal dysplasia. Several transcript variants encoding many different isoforms have been found for this gene.

UniProt: [Q92838](#)

Pathways: [Tube Formation](#)

## Application Details

Application Notes: Flow Cyt 1:100

Restrictions: For Research Use only

## Handling

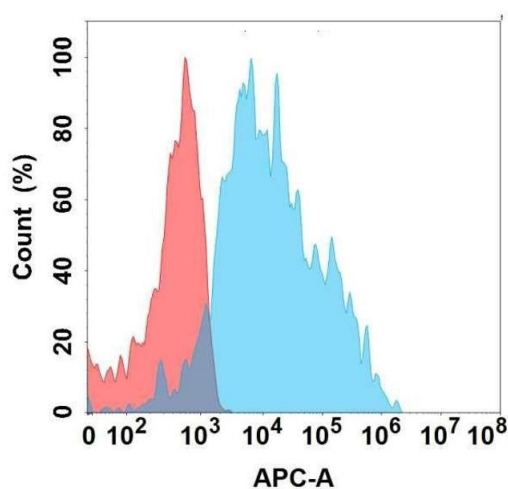
Format: Liquid

Storage: -20 °C,-80 °C

Storage Comment: Store at -20°C to -80°C for 12 months in lyophilized form. After reconstitution, if not intended for use within a month, aliquot and store at -80°C (Avoid repeated freezing and thawing).  
Lyophilized proteins are shipped at ambient temperature.

Expiry Date: 12 months

## Images



### Flow Cytometry

**Image 1.** Flow cytometry analysis with Anti-EDA on Expi293 cells transfected with human EDA (Blue histogram) or Expi293 transfected with irrelevant protein (Red histogram).