

Datasheet for ABIN7490642

anti-FOLR2 antibody



[Go to Product page](#)

1 Image

Overview

Quantity:	100 µg
Target:	FOLR2
Reactivity:	Human
Host:	Rabbit
Clonality:	Chimeric
Application:	Flow Cytometry (FACS)

Product Details

Isotype:	IgG1
Fragment:	Fc fragment
Characteristics:	Rabbit/Human Fc chimeric IgG1
Purification:	Purified from cell culture supernatant by affinity chromatography

Target Details

Target:	FOLR2
Alternative Name:	FOLR2 (FOLR2 Products)
Background:	<p>BETA-HFR, FBP, FBP/PL-1, FOLR1, FR-BETA, FR-P3, FRbeta,</p> <p>Description: ,The protein encoded by this gene is a member of the folate receptor (FOLR) family, and these genes exist in a cluster on chromosome 11. Members of this gene family have a high affinity for folic acid and for several reduced folic acid derivatives, and they mediate delivery of 5-methyltetrahydrofolate to the interior of cells. This protein has a 68 % and 79 % sequence</p>

Target Details

homology with the FOLR1 and FOLR3 proteins, respectively. Although this protein was originally thought to be specific to placenta, it can also exist in other tissues, and it may play a role in the transport of methotrexate in synovial macrophages in rheumatoid arthritis patients. Multiple transcript variants that encode the same protein have been found for this gene.

UniProt: [P14207](#)

Pathways: [Dicarboxylic Acid Transport](#)

Application Details

Application Notes: Flow Cyt 1:100

Restrictions: For Research Use only

Handling

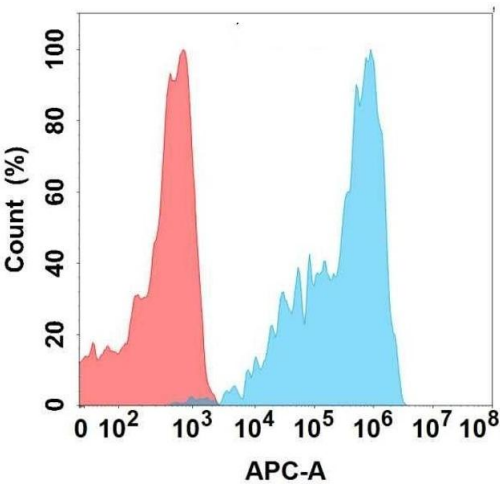
Format: Liquid

Storage: -20 °C,-80 °C

Storage Comment: Store at -20°C to -80°C for 12 months in lyophilized form. After reconstitution, if not intended for use within a month, aliquot and store at -80°C (Avoid repeated freezing and thawing).
Lyophilized proteins are shipped at ambient temperature.

Expiry Date: 12 months

Images



Flow Cytometry

Image 1. Flow cytometry analysis with Anti-F on Expi293 cells transfected with human F (Blue histogram) or Expi293 transfected with irrelevant protein (Red histogram).