

Datasheet for ABIN7490670

**anti-FLT3LG antibody**[Go to Product page](#)**1** Image

## Overview

Quantity:	100 µg
Target:	FLT3LG
Reactivity:	Human
Host:	Rabbit
Clonality:	Chimeric
Application:	Flow Cytometry (FACS)

## Product Details

Isotype:	IgG1
Fragment:	Fc fragment
Characteristics:	Rabbit/Human Fc chimeric IgG1
Purification:	Purified from cell culture supernatant by affinity chromatography

## Target Details

Target:	FLT3LG
Alternative Name:	FLT3LG ( <a href="#">FLT3LG Products</a> )
Background:	FLT3LG, FL, FLT3L, Flt3 ligand Description: ,FMS-like tyrosine kinase 3 ligand (Flt-3 Ligand) is also known as FL, Flt3L and FLT3LG, is an α-helical cytokine that promotes the differentiation of multiple hematopoietic cell lineages. FLT3LG is expressed as a noncovalentlylinked dimer by T cells and bone marrow and thymic fibroblasts. Each 36 kDa chain carries approximately 12 kDa of N- and O- linked

## Target Details

---

carbohydrates. FLT3LG is structurally homologous to stem cell factor (SCF) and colony stimulating factor 1 (CSF-1). FLT3LG acts as a growth factor that increases the number of immune cells by activating the hematopoietic progenitors. It also induces the mobilization of the hematopoietic progenitors and stem cells in vivo which may help the system to kill cancer cells. FLT3LG induces the expansion of monocytes and immature dendritic cells as well as early B cell lineage differentiation. FLT3LG cooperates with IL2, IL6, IL7, and IL15 to induce NK cell development and with IL3, IL7 and IL11 to induce terminal B cell maturation. Animal studies also show FLT3LG to reduce the severity of experimentally induced allergic inflammation. FLT3LG is crucial for steady-state pDC and cDC development. A lack of FLT3L results in low levels of DCs.

---

UniProt: [P49771](#)

---

Pathways: [RTK Signaling](#)

## Application Details

---

Application Notes: Flow Cyt 1:100

---

Restrictions: For Research Use only

## Handling

---

Format: Liquid

---

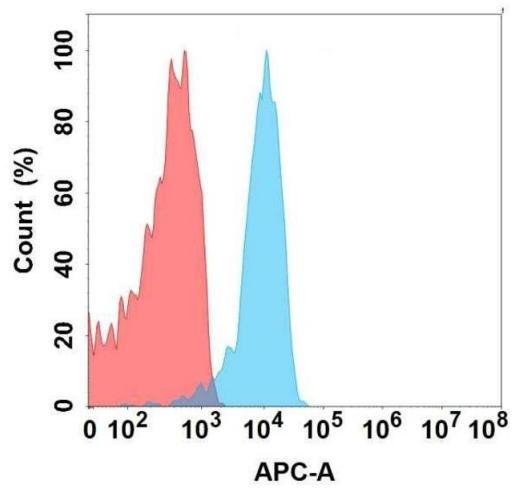
Storage: -20 °C,-80 °C

---

Storage Comment: Store at -20°C to -80°C for 12 months in lyophilized form. After reconstitution, if not intended for use within a month, aliquot and store at -80°C (Avoid repeated freezing and thawing).  
Lyophilized proteins are shipped at ambient temperature.

---

Expiry Date: 12 months



### Flow Cytometry

**Image 1.** Flow cytometry analysis with Anti-LG on Expi293 cells transfected with human LG (Blue histogram) or Expi293 transfected with irrelevant protein (Red histogram).