

Datasheet for ABIN7490690

anti-Thymic Stromal Lymphopoietin antibody[Go to Product page](#)**1** Image

Overview

Quantity:	100 µg
Target:	Thymic Stromal Lymphopoietin (TSLP)
Reactivity:	Human
Host:	Rabbit
Clonality:	Chimeric
Application:	Flow Cytometry (FACS)

Product Details

Isotype:	IgG1
Fragment:	Fc fragment
Characteristics:	Rabbit/Human Fc chimeric IgG1
Purification:	Purified from cell culture supernatant by affinity chromatography

Target Details

Target:	Thymic Stromal Lymphopoietin (TSLP)
Alternative Name:	TSLP (TSLP Products)
Background:	TSLP, Description: This gene encodes a hemopoietic cytokine proposed to signal through a heterodimeric receptor complex composed of the thymic stromal lymphopoietin receptor and the IL-7R alpha chain. It mainly impacts myeloid cells and induces the release of T cell-attracting chemokines from monocytes and enhances the maturation of CD11c() dendritic

Target Details

cells. The protein promotes T helper type 2 (TH2) cell responses that are associated with immunity in various inflammatory diseases, including asthma, allergic inflammation and chronic obstructive pulmonary disease. The protein is therefore considered a potential therapeutic target for the treatment of such diseases. In addition, the shorter (predominant) isoform is an antimicrobial protein, displaying antibacterial and antifungal activity against *B. cereus*, *E. coli*, *E. faecalis*, *S. mitis*, *S. epidermidis*, and *C. albicans*. Alternative splicing of this gene results in multiple transcript variants.

UniProt: [Q969D9](#)

Application Details

Application Notes: Flow Cyt 1:100

Restrictions: For Research Use only

Handling

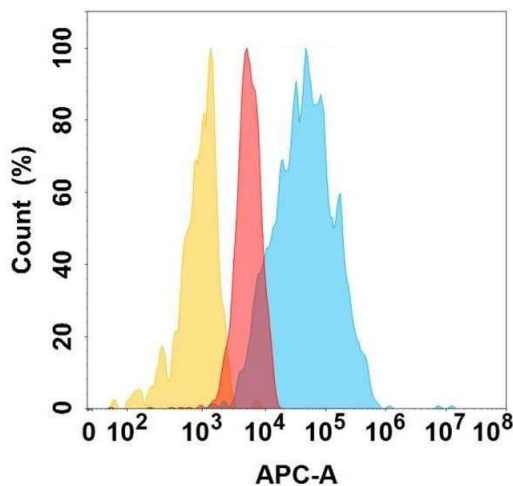
Format: Liquid

Storage: -20 °C,-80 °C

Storage Comment: Store at -20°C to -80°C for 12 months in lyophilized form. After reconstitution, if not intended for use within a month, aliquot and store at -80°C (Avoid repeated freezing and thawing).
Lyophilized proteins are shipped at ambient temperature.

Expiry Date: 12 months

Images



Flow Cytometry

Image 1. TSLP protein is highly expressed on the surface of Expi293 cell membrane. Flow cytometry analysis with Anti-TSLP on Expi293 cells transfected with human TSLP (Blue histogram) or Expi293 transfected with irrelevant protein (Red histogram), and Isotype antibody on Expi293 transfected with irrelevant protein (Orange histogram).