

Datasheet for ABIN7490694

anti-GP6 antibody[Go to Product page](#)**1** Image

Overview

Quantity:	100 µg
Target:	GP6
Reactivity:	Human
Host:	Rabbit
Clonality:	Chimeric
Application:	Flow Cytometry (FACS)

Product Details

Isotype:	IgG1
Fragment:	Fc fragment
Characteristics:	Rabbit/Human Fc chimeric IgG1
Purification:	Purified from cell culture supernatant by affinity chromatography

Target Details

Target:	GP6
Alternative Name:	GP6 (GP6 Products)
Background:	BDPLT11, GPIV, GPVI Description: This gene encodes a platelet membrane glycoprotein of the immunoglobulin superfamily. The encoded protein is a receptor for collagen and plays a critical role in collagen-induced platelet aggregation and thrombus formation. The encoded protein forms a complex with the Fc receptor gamma-chain that initiates the platelet activation signaling cascade upon

Target Details

collagen binding. Mutations in this gene are a cause of platelet-type bleeding disorder-11 (BDPLT11). Alternatively spliced transcript variants encoding multiple isoforms have been observed for this gene.

UniProt: [Q9HCN6](#)

Application Details

Application Notes: Flow Cyt 1:100

Restrictions: For Research Use only

Handling

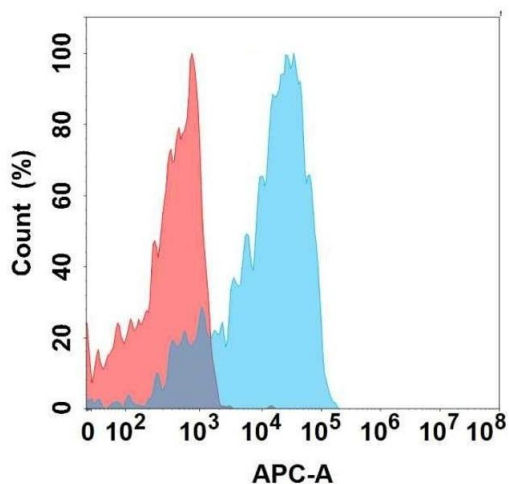
Format: Liquid

Storage: -20 °C,-80 °C

Storage Comment: Store at -20°C to -80°C for 12 months in lyophilized form. After reconstitution, if not intended for use within a month, aliquot and store at -80°C (Avoid repeated freezing and thawing). Lyophilized proteins are shipped at ambient temperature.

Expiry Date: 12 months

Images



Flow Cytometry

Image 1. Flow cytometry analysis with Anti-GP6 on Expi293 cells transfected with human GP6 (Blue histogram) or Expi293 transfected with irrelevant protein (Red histogram).