



Datasheet for ABIN7490698  
**anti-SSTR2 antibody**



[Go to Product page](#)

1 Image

Overview

Quantity:	100 µg
Target:	SSTR2
Reactivity:	Human
Host:	Rabbit
Clonality:	Chimeric
Conjugate:	This SSTR2 antibody is un-conjugated
Application:	Flow Cytometry (FACS)

Product Details

Isotype:	IgG1
Fragment:	Fc fragment
Characteristics:	Rabbit/Human Fc chimeric IgG1
Purification:	Purified from cell culture supernatant by affinity chromatography

Target Details

Target:	SSTR2
Alternative Name:	SSTR2 ( <a href="#">SSTR2 Products</a> )
Background:	SRIF-1, SS2R, Description: Somatostatin acts at many sites to inhibit the release of many hormones and other secretory proteins. The biologic effects of somatostatin are probably mediated by a family of G protein-coupled receptors that are expressed in a tissue-specific manner. SSTR2 is a member

## Target Details

of the superfamily of receptors having seven transmembrane segments and is expressed in highest levels in cerebrum and kidney.

UniProt: [P30874](#)

## Application Details

Application Notes: Flow Cyt 1:100

Restrictions: For Research Use only

## Handling

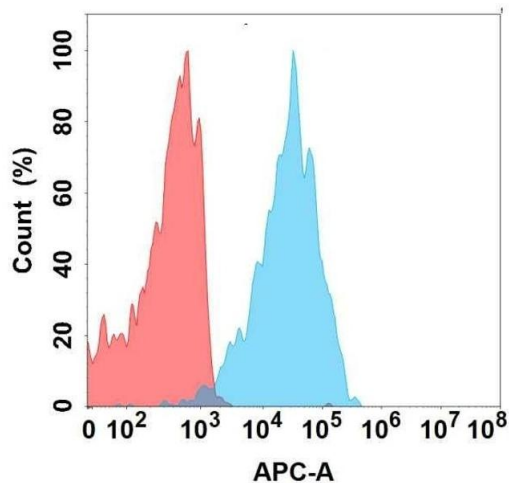
Format: Liquid

Storage: -20 °C,-80 °C

Storage Comment: Store at -20°C to -80°C for 12 months in lyophilized form. After reconstitution, if not intended for use within a month, aliquot and store at -80°C (Avoid repeated freezing and thawing).  
Lyophilized proteins are shipped at ambient temperature.

Expiry Date: 12 months

## Images



### Flow Cytometry

**Image 1.** Flow cytometry analysis with Anti-S on Expi293 cells transfected with human S (Blue histogram) or Expi293 transfected with irrelevant protein (Red histogram).