

Datasheet for ABIN7490710
anti-M-CSF/CSF1 antibody



[Go to Product page](#)

1 Image

Overview

Quantity:	100 µg
Target:	M-CSF/CSF1 (CSF1)
Reactivity:	Human
Host:	Rabbit
Clonality:	Chimeric
Application:	Flow Cytometry (FACS)

Product Details

Isotype:	IgG1
Fragment:	Fc fragment
Characteristics:	Rabbit/Human Fc chimeric IgG1
Purification:	Purified from cell culture supernatant by affinity chromatography

Target Details

Target:	M-CSF/CSF1 (CSF1)
Alternative Name:	M-CSF (CSF1 Products)
Background:	<p>CSF-1, MCSF,</p> <p>Description: The protein encoded by this gene is a cytokine that controls the production, differentiation, and function of macrophages. The active form of the protein is found extracellularly as a disulfide-linked homodimer, and is thought to be produced by proteolytic cleavage of membrane-bound precursors. The encoded protein may be involved in</p>

Target Details

	development of the placenta. Alternate splicing results in multiple transcript variants.
UniProt:	P09603
Pathways:	RTK Signaling

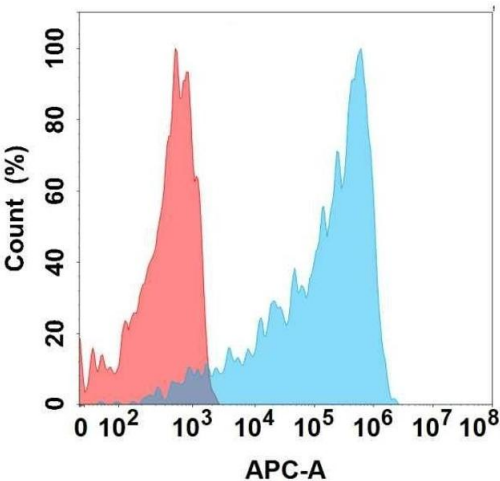
Application Details

Application Notes:	Flow Cyt 1:100
Restrictions:	For Research Use only

Handling

Format:	Liquid
Storage:	-20 °C,-80 °C
Storage Comment:	Store at -20°C to -80°C for 12 months in lyophilized form. After reconstitution, if not intended for use within a month, aliquot and store at -80°C (Avoid repeated freezing and thawing). Lyophilized proteins are shipped at ambient temperature.
Expiry Date:	12 months

Images



Flow Cytometry

Image 1. Flow cytometry analysis with Anti-M-CSF on Expi293 cells transfected with human M-CSF (Blue histogram) or Expi293 transfected with irrelevant protein (Red histogram).