

Datasheet for ABIN7490738

anti-BST1 antibody[Go to Product page](#)**1** Image

Overview

Quantity:	100 µg
Target:	BST1
Reactivity:	Human
Host:	Rabbit
Clonality:	Chimeric
Conjugate:	This BST1 antibody is un-conjugated
Application:	Flow Cytometry (FACS)

Product Details

Isotype:	IgG1
Fragment:	Fc fragment
Characteristics:	Rabbit/Human Fc chimeric IgG1
Purification:	Purified from cell culture supernatant by affinity chromatography

Target Details

Target:	BST1
Alternative Name:	BST1 (BST1 Products)
Background:	CD157, Description: Bone marrow stromal cell antigen-1 is a stromal cell line-derived glycosylphosphatidylinositol-anchored molecule that facilitates pre-B-cell growth. The deduced amino acid sequence exhibits 33 % similarity with CD38. BST1 expression is enhanced in bone

Target Details

marrow stromal cell lines derived from patients with rheumatoid arthritis. The polyclonal B-cell abnormalities in rheumatoid arthritis may be, at least in part, attributed to BST1 overexpression in the stromal cell population.

UniProt: [Q10588](#)

Application Details

Application Notes: Flow Cyt 1:100

Restrictions: For Research Use only

Handling

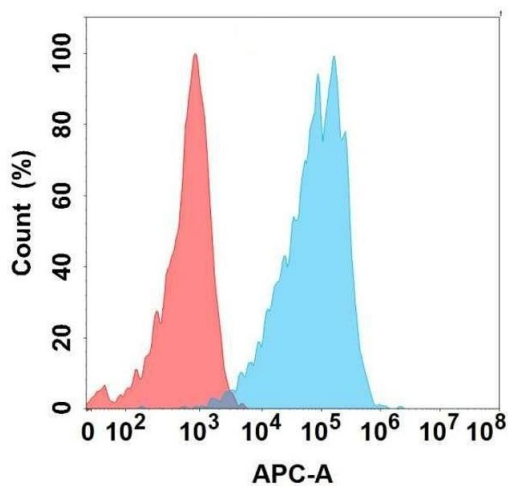
Format: Liquid

Storage: -20 °C,-80 °C

Storage Comment: Store at -20°C to -80°C for 12 months in lyophilized form. After reconstitution, if not intended for use within a month, aliquot and store at -80°C (Avoid repeated freezing and thawing).
Lyophilized proteins are shipped at ambient temperature.

Expiry Date: 12 months

Images



Flow Cytometry

Image 1. Flow cytometry analysis with Anti- on Expi293 cells transfected with human (Blue histogram) or Expi293 transfected with irrelevant protein (Red histogram).