

Datasheet for ABIN7490742  
**anti-SLAMF1 antibody**



[Go to Product page](#)

1 Image

## Overview

Quantity:	100 µg
Target:	SLAMF1
Reactivity:	Human
Host:	Rabbit
Clonality:	Chimeric
Conjugate:	This SLAMF1 antibody is un-conjugated
Application:	Flow Cytometry (FACS)

## Product Details

Isotype:	IgG1
Fragment:	Fc fragment
Characteristics:	Rabbit/Human Fc chimeric IgG1
Purification:	Purified from cell culture supernatant by affinity chromatography

## Target Details

Target:	SLAMF1
Alternative Name:	SLAMF1 ( <a href="#">SLAMF1 Products</a> )
Background:	SLAMF1, CD150, CDw150, SLAM, IPO-3, Description: SLAMF1 (Signaling Lymphocytic Activation Molecule Family Member 1) is a Protein Coding gene. Diseases associated with SLAMF1 include Measles and Subacute Sclerosing Panencephalitis. Among its related pathways are Dendritic Cells Developmental

## Target Details

Lineage Pathway and T Cell Co-Signaling Pathway: Ligand-Receptor Interactions. Gene Ontology (GO) annotations related to this gene include antigen binding. An important paralog of this gene is LY9.

UniProt: [Q13291](#)

## Application Details

Application Notes: Flow Cyt 1:100

Restrictions: For Research Use only

## Handling

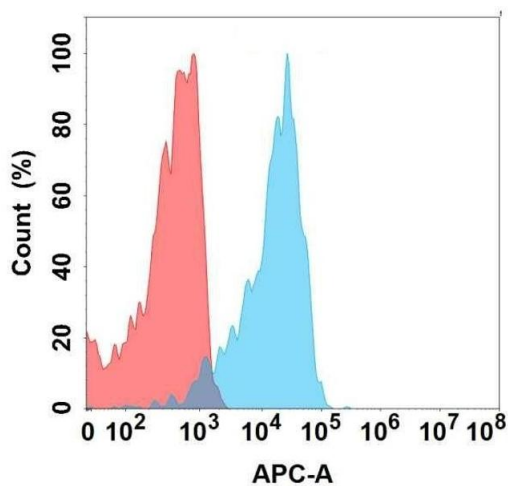
Format: Liquid

Storage: -20 °C,-80 °C

Storage Comment: Store at -20°C to -80°C for 12 months in lyophilized form. After reconstitution, if not intended for use within a month, aliquot and store at -80°C (Avoid repeated freezing and thawing). Lyophilized proteins are shipped at ambient temperature.

Expiry Date: 12 months

## Images



### Flow Cytometry

**Image 1.** Flow cytometry analysis with Anti-SL on Expi293 cells transfected with human SL (Blue histogram) or Expi293 transfected with irrelevant protein (Red histogram).