

Datasheet for ABIN7490762

anti-Prolactin Receptor antibody[Go to Product page](#)**1** Image

Overview

Quantity:	100 µg
Target:	Prolactin Receptor (PRLR)
Reactivity:	Human
Host:	Rabbit
Clonality:	Chimeric
Application:	Flow Cytometry (FACS)

Product Details

Isotype:	IgG1
Fragment:	Fc fragment
Characteristics:	Rabbit/Human Fc chimeric IgG1
Purification:	Purified from cell culture supernatant by affinity chromatography

Target Details

Target:	Prolactin Receptor (PRLR)
Alternative Name:	PRLR (PRLR Products)
Background:	<p>Prolactin receptor, PRL-R,</p> <p>Description: This gene encodes a receptor for the anterior pituitary hormone, prolactin, and belongs to the type I cytokine receptor family. Prolactin-dependent signaling occurs as the result of ligand-induced dimerization of the prolactin receptor. Several alternatively spliced transcript variants encoding different membrane-bound and soluble isoforms have been</p>

Target Details

	described for this gene, which may function to modulate the endocrine and autocrine effects of prolactin in normal tissue and cancer. [provided by RefSeq, Feb 2011]
UniProt:	P16471
Pathways:	JAK-STAT Signaling, Response to Growth Hormone Stimulus

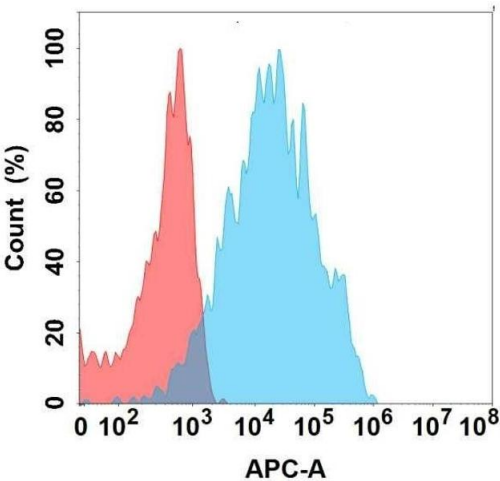
Application Details

Application Notes:	Flow Cyt 1:100
Restrictions:	For Research Use only

Handling

Format:	Liquid
Storage:	-20 °C,-80 °C
Storage Comment:	Store at -20°C to -80°C for 12 months in lyophilized form. After reconstitution, if not intended for use within a month, aliquot and store at -80°C (Avoid repeated freezing and thawing). Lyophilized proteins are shipped at ambient temperature.
Expiry Date:	12 months

Images



Flow Cytometry

Image 1. Flow cytometry analysis with Anti-PRLR on Expi293 cells transfected with human PRLR (Blue histogram) or Expi293 transfected with irrelevant protein (Red histogram).