

Datasheet for ABIN7490770  
**anti-TNFSF15 antibody**



[Go to Product page](#)

1 Image

## Overview

Quantity:	100 µg
Target:	TNFSF15
Reactivity:	Human
Host:	Rabbit
Clonality:	Chimeric
Application:	Flow Cytometry (FACS)

## Product Details

Isotype:	IgG1
Fragment:	Fc fragment
Characteristics:	Rabbit/Human Fc chimeric IgG1
Purification:	Purified from cell culture supernatant by affinity chromatography

## Target Details

Target:	TNFSF15
Alternative Name:	TNFSF15 ( <a href="#">TNFSF15 Products</a> )
Background:	TL1, VEGI, Description: The protein encoded by this gene is a cytokine that belongs to the tumor necrosis factor (TNF) ligand family. This protein is abundantly expressed in endothelial cells, but is not expressed in either B or T cells. The expression of this protein is inducible by TNF and IL-1 alpha. This cytokine is a ligand for receptor TNFRSF25 and decoy receptor TNFRSF21/DR6. It

Target Details

can activate NF-kappaB and MAP kinases, and acts as an autocrine factor to induce apoptosis in endothelial cells. This cytokine is also found to inhibit endothelial cell proliferation, and thus may function as an angiogenesis inhibitor. Two transcript variants encoding different isoforms have been found for this gene. [provided by RefSeq, Feb 2011]

UniProt:	<a href="#">O95150</a>
Pathways:	<a href="#">Positive Regulation of Endopeptidase Activity</a> , <a href="#">Autophagy</a>

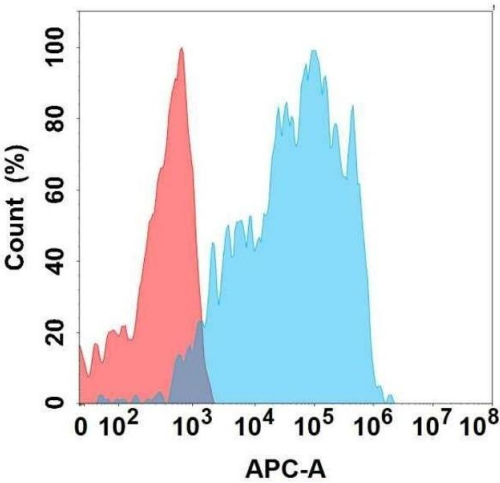
Application Details

Application Notes:	Flow Cyt 1:100
Restrictions:	For Research Use only

Handling

Format:	Liquid
Storage:	-20 °C,-80 °C
Storage Comment:	Store at -20°C to -80°C for 12 months in lyophilized form. After reconstitution, if not intended for use within a month, aliquot and store at -80°C (Avoid repeated freezing and thawing).  Lyophilized proteins are shipped at ambient temperature.
Expiry Date:	12 months

Images



Flow Cytometry

**Image 1.** Flow cytometry analysis with Anti-TN on Expi293 cells transfected with human TN (Blue histogram) or Expi293 transfected with irrelevant protein (Red histogram).