



[Go to Product page](#)

Datasheet for ABIN7490778

anti-NG2 antibody

1 Image

Overview

Quantity:	100 µg
Target:	NG2 (MCSP)
Reactivity:	Human
Host:	Rabbit
Clonality:	Chimeric
Conjugate:	This NG2 antibody is un-conjugated
Application:	Flow Cytometry (FACS)

Product Details

Isotype:	IgG1
Fragment:	Fc fragment
Characteristics:	Rabbit/Human Fc chimeric IgG1
Purification:	Purified from cell culture supernatant by affinity chromatography

Target Details

Target:	NG2 (MCSP)
Alternative Name:	CSPG4 (MCSP Products)
Background:	CSPG4A, HMW-MAA, MCSP, MCSPG, MEL-CSPG, MSK16, NG2, Description: ,A human melanoma-associated chondroitin sulfate proteoglycan plays a role in stabilizing cell-substratum interactions during early events of melanoma cell spreading on endothelial basement membranes. CSPG4 represents an integral membrane chondroitin

Target Details

sulfate proteoglycan expressed by human malignant melanoma cells. [provided by RefSeq, Jul 2008]

UniProt: [Q6UVK1](#)

Pathways: [Glycosaminoglycan Metabolic Process](#)

Application Details

Application Notes: Flow Cyt 1:100

Restrictions: For Research Use only

Handling

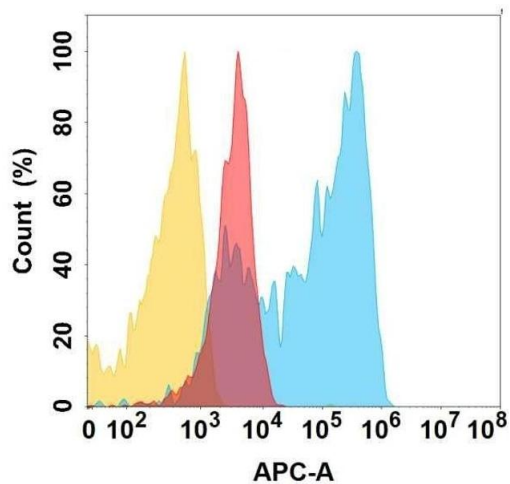
Format: Liquid

Storage: -20 °C,-80 °C

Storage Comment: Store at -20°C to -80°C for 12 months in lyophilized form. After reconstitution, if not intended for use within a month, aliquot and store at -80°C (Avoid repeated freezing and thawing).
Lyophilized proteins are shipped at ambient temperature.

Expiry Date: 12 months

Images



Flow Cytometry

Image 1. C protein is highly expressed on the surface of Expi293 cell membrane. Flow cytometry analysis with Anti-C on Expi293 cells transfected with human C (Blue histogram) or Expi293 transfected with irrelevant protein (Red histogram), and Isotype antibody on Expi293 transfected with irrelevant protein (Orange histogram).