

Datasheet for ABIN7490782
anti-TGFBR2 antibody



[Go to Product page](#)

1 Image

Overview

Quantity:	100 µg
Target:	TGFBR2
Reactivity:	Human
Host:	Rabbit
Clonality:	Chimeric
Application:	Flow Cytometry (FACS)

Product Details

Isotype:	IgG1
Fragment:	Fc fragment
Characteristics:	Rabbit/Human Fc chimeric IgG1
Purification:	Purified from cell culture supernatant by affinity chromatography

Target Details

Target:	TGFBR2
Alternative Name:	TGFBR2 (TGFBR2 Products)
Background:	AAT3, FAA3, LDS1B, LDS2, LDS2B, MFS2, RIIC, TAAD2, TBR-ii, TBRII, TGFbeta-RII, TGFR-2, Description: The protein encoded by this gene is a transmembrane protein that has a protein kinase domain, forms a heterodimeric complex with TGF-beta receptor type-1, and binds TGF-beta. This receptor/ligand complex phosphorylates proteins, which then enter the nucleus and regulate the transcription of genes related to cell proliferation, cell cycle arrest, wound healing,

Target Details

immunosuppression, and tumorigenesis. Mutations in this gene have been associated with Marfan Syndrome, Loeys-Deitz Aortic Aneurysm Syndrome, and the development of various types of tumors. Alternatively spliced transcript variants encoding different isoforms have been characterized. [provided by RefSeq, Aug 2017]

UniProt: [P37173](#)

Application Details

Application Notes: Flow Cyt 1:100

Restrictions: For Research Use only

Handling

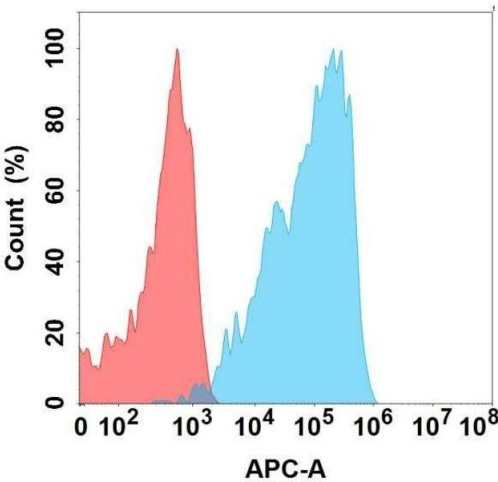
Format: Liquid

Storage: -20 °C,-80 °C

Storage Comment: Store at -20°C to -80°C for 12 months in lyophilized form. After reconstitution, if not intended for use within a month, aliquot and store at -80°C (Avoid repeated freezing and thawing).
Lyophilized proteins are shipped at ambient temperature.

Expiry Date: 12 months

Images



Flow Cytometry

Image 1. Flow cytometry analysis with Anti-TG on Expi293 cells transfected with human TG (Blue histogram) or Expi293 transfected with irrelevant protein (Red histogram).