

Datasheet for ABIN7490786  
**anti-CLEC1A antibody**



[Go to Product page](#)

1 Image

## Overview

Quantity:	100 µg
Target:	CLEC1A
Reactivity:	Human
Host:	Rabbit
Clonality:	Chimeric
Application:	Flow Cytometry (FACS)

## Product Details

Isotype:	IgG1
Fragment:	Fc fragment
Characteristics:	Rabbit/Human Fc chimeric IgG1
Purification:	Purified from cell culture supernatant by affinity chromatography

## Target Details

Target:	CLEC1A
Alternative Name:	CLEC1A ( <a href="#">CLEC1A Products</a> )
Background:	CLEC-1, CLEC1, Description: This gene encodes a member of the C-type lectin/C-type lectin-like domain (CTL/CTLD) superfamily. Members of this family share a common protein fold and have diverse functions, such as cell adhesion, cell-cell signaling, glycoprotein turnover, and roles in inflammation and immune response. The encoded protein may play a role in regulating

## Target Details

dendritic cell function. This gene is closely linked to other CTL/CTLD superfamily members on chromosome 12p13 in the natural killer gene complex region. Alternative splicing results in multiple transcript variants. [provided by RefSeq, Jul 2014]

UniProt: [Q8NC01](#)

## Application Details

Application Notes: Flow Cyt 1:100

Restrictions: For Research Use only

## Handling

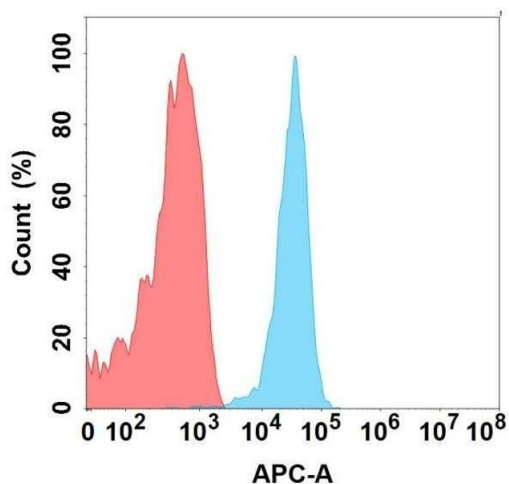
Format: Liquid

Storage: -20 °C,-80 °C

Storage Comment: Store at -20°C to -80°C for 12 months in lyophilized form. After reconstitution, if not intended for use within a month, aliquot and store at -80°C (Avoid repeated freezing and thawing).  
Lyophilized proteins are shipped at ambient temperature.

Expiry Date: 12 months

## Images



### Flow Cytometry

**Image 1.** Flow cytometry analysis with Anti-CA on Expi293 cells transfected with human CA (Blue histogram) or Expi293 transfected with irrelevant protein (Red histogram).