

Datasheet for ABIN7490790  
**anti-CLEC9A antibody**



[Go to Product page](#)

1 Image

## Overview

Quantity:	100 µg
Target:	CLEC9A
Reactivity:	Human
Host:	Rabbit
Clonality:	Chimeric
Application:	Flow Cytometry (FACS)

## Product Details

Isotype:	IgG1
Fragment:	Fc fragment
Characteristics:	Rabbit/Human Fc chimeric IgG1
Purification:	Purified from cell culture supernatant by affinity chromatography

## Target Details

Target:	CLEC9A
Alternative Name:	CLEC9A ( <a href="#">CLEC9A Products</a> )
Background:	CD370, DNGR-1, DNGR1, UNQ9341, Description: CLEC9A is a group V C-type lectin-like receptor (CTLR) that functions as an activation receptor and is expressed on myeloid lineage cells (Huysamen et al., 2008 [PubMed 18408006]).[supplied by OMIM, Aug 2008]
UniProt:	<a href="#">Q6UXN8</a>

## Application Details

Application Notes: Flow Cyt 1:100

Restrictions: For Research Use only

## Handling

Format: Liquid

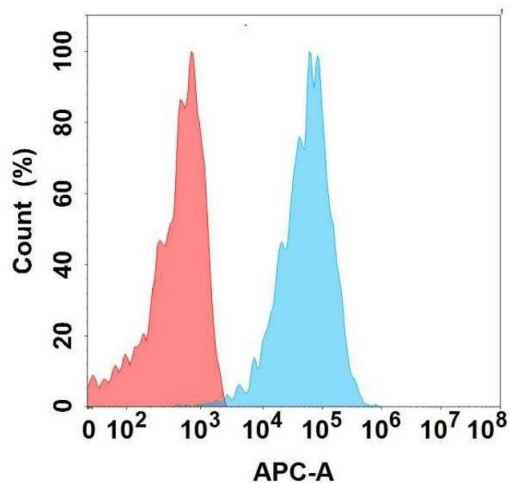
Storage: -20 °C,-80 °C

Storage Comment: Store at -20°C to -80°C for 12 months in lyophilized form. After reconstitution, if not intended for use within a month, aliquot and store at -80°C (Avoid repeated freezing and thawing).

Lyophilized proteins are shipped at ambient temperature.

Expiry Date: 12 months

## Images



### Flow Cytometry

**Image 1.** Flow cytometry analysis with Anti-CA on Expi293 cells transfected with human CA (Blue histogram) or Expi293 transfected with irrelevant protein (Red histogram).