

Datasheet for ABIN7490794  
**anti-CXCR1 antibody**[Go to Product page](#)**1** Image

## Overview

Quantity:	100 µg
Target:	CXCR1
Reactivity:	Human
Host:	Rabbit
Clonality:	Chimeric
Conjugate:	This CXCR1 antibody is un-conjugated
Application:	Flow Cytometry (FACS)

## Product Details

Isotype:	IgG1
Fragment:	Fc fragment
Characteristics:	Rabbit/Human Fc chimeric IgG1
Purification:	Purified from cell culture supernatant by affinity chromatography

## Target Details

Target:	CXCR1
Alternative Name:	CXCR1 ( <a href="#">CXCR1 Products</a> )
Background:	C-C, C-C-CKR-1, CD128, CD181, CDw128a, CKR-1, CMKAR1, IL8R1, IL8RA, IL8RBA, Description: The protein encoded by this gene is a member of the G-protein-coupled receptor family. This protein is a receptor for interleukin 8 (IL8). It binds to IL8 with high affinity, and transduces the signal through a G-protein activated second messenger system. Knockout

## Target Details

studies in mice suggested that this protein inhibits embryonic oligodendrocyte precursor migration in developing spinal cord. This gene, IL8RB, a gene encoding another high affinity IL8 receptor, as well as IL8RBP, a pseudogene of IL8RB, form a gene cluster in a region mapped to chromosome 2q33-q36. [provided by RefSeq, Jul 2008]

UniProt: [P25024](#)

Pathways: [cAMP Metabolic Process](#)

## Application Details

Application Notes: Flow Cyt 1:100

Restrictions: For Research Use only

## Handling

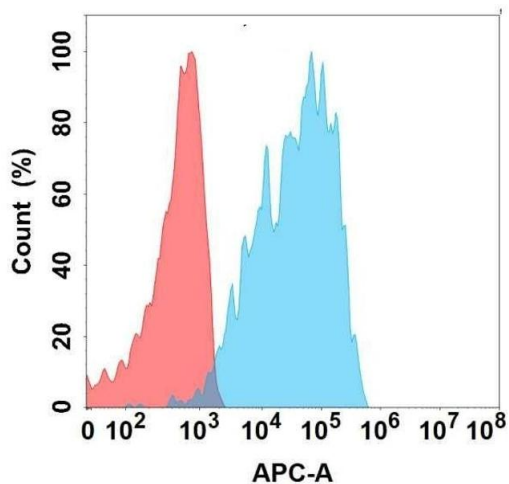
Format: Liquid

Storage: -20 °C,-80 °C

Storage Comment: Store at -20°C to -80°C for 12 months in lyophilized form. After reconstitution, if not intended for use within a month, aliquot and store at -80°C (Avoid repeated freezing and thawing).  
Lyophilized proteins are shipped at ambient temperature.

Expiry Date: 12 months

## Images



### Flow Cytometry

**Image 1.** Flow cytometry analysis with Anti-C on Expi293 cells transfected with human C (Blue histogram) or Expi293 transfected with irrelevant protein (Red histogram).