

Datasheet for ABIN7490798

anti-IL-22 antibody[Go to Product page](#)**1** Image

Overview

Quantity:	100 µg
Target:	IL-22 (IL22)
Reactivity:	Human
Host:	Rabbit
Clonality:	Chimeric
Application:	Flow Cytometry (FACS)

Product Details

Isotype:	IgG1
Fragment:	Fc fragment
Characteristics:	Rabbit/Human Fc chimeric IgG1
Purification:	Purified from cell culture supernatant by affinity chromatography

Target Details

Target:	IL-22 (IL22)
Alternative Name:	IL22 (IL22 Products)
Background:	IL-22,IL-TIF,ZCYTO18, Description: This gene is a member of the IL10 family of cytokines that mediate cellular inflammatory responses. The encoded protein functions in antimicrobial defense at mucosal surfaces and in tissue repair. This protein also has pro-inflammatory properties and plays a role in the pathogenesis of several intestinal diseases. [provided by RefSeq, Jul 2018]

Target Details

UniProt: [Q9GZX6](#)

Application Details

Application Notes: Flow Cyt 1:100

Restrictions: For Research Use only

Handling

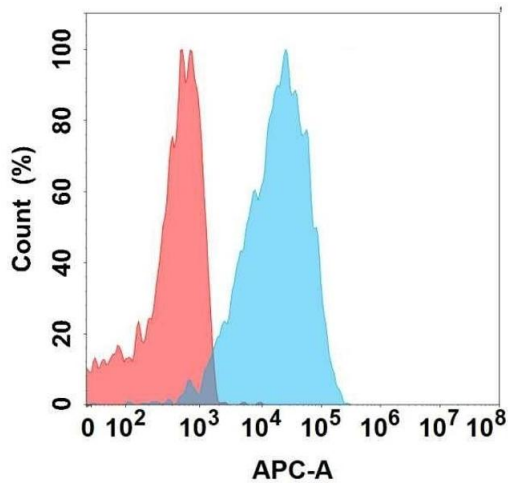
Format: Liquid

Storage: -20 °C,-80 °C

Storage Comment: Store at -20°C to -80°C for 12 months in lyophilized form. After reconstitution, if not intended for use within a month, aliquot and store at -80°C (Avoid repeated freezing and thawing).
Lyophilized proteins are shipped at ambient temperature.

Expiry Date: 12 months

Images



Flow Cytometry

Image 1. Flow cytometry analysis with Anti-IL22 on Expi293 cells transfected with human IL22 (Blue histogram) or Expi293 transfected with irrelevant protein (Red histogram).